

7th Annual
FEMALE SALE

SUNDAY • AUGUST 20 • 2023

12:00 PM CDT • BYARS, OKLAHOMA

LINZ HERITAGE ANGUS

Welcome



Welcome to our 7th Annual Female Sale and our first female sale at Linz Heritage Angus at Blue Branch Ranch. My team and I are excited to have you join us for the sale. We have a wonderful line up and believe you'll see the immense growth and diversity in our program since our move to Byars, Oklahoma.

What an exciting time for the Beef Cattle industry. With calf and fat cattle prices on the rise and rain starting to fall in drought areas, the upside could not be higher for the American rancher. Often our first instinct as we build back is to lose function and begin to think quantity over quality. I can assure you that here at Linz Heritage Angus that is the opposite of our plan. We continue to strive for cattle that can thrive in many regions. Functional cattle that are sound made while having a balance of body and power is what we are all about. However, we do not just like them to look good in the pasture, they must perform; breed back, wean off a big calf, and have that calf continue the production cycle.

Once again, we humbly put up our best for your evaluation and this set has a lot of potential. The 453 daughters certainly rise to the top with some impressive EPDs but more importantly a great phenotype. We are very excited about the Baldrige Jordan calves in the sale, they hold so much promise. I am confident that many of these females will make a big splash in the donor pen. Many bred cows and heifers that are going to be so successful, regardless if you are trying to retain heifers or sell high caliber calves' next fall.

Please join us Sunday, August 20 for what will be another amazing sale. We look forward to celebrating this event with amazing food and refreshments. Thank you and see you soon!



SCAN HERE WATCH THE LINZ BRAND STORY.

Jim Linz

SCHEDULE OF EVENTS

Saturday, August 19, 2023

8:00 AM - Cattle available for viewing

6:30 PM - Pre-Sale Dinner

Sunday, August 20, 2023

8:00 AM - Cattle available for viewing

11:00 AM - Pre-Sale Lunch

12:00 PM - 7th Annual Linz Heritage Angus Female Sale

USING THE QR CODES



View videos of each lot by opening the camera app on your smart phone, hovering over the QR code and tapping the link that appears! Please note that videos will be available two weeks prior to the sale.

RB LADY DENVER 167-453

\$300,000 VALUED DONOR (NOW DECEASED)



Swigart

\$2 MILLION IN PROGENY SALES

RB Lady Denver 167-453 has secured the role of leading “Lady” with her prolific career as the \$300,000 valued and now deceased donor who has produced in excess of \$2 million in progeny sales. Her son, Ingram Heisman was the \$265,000 selection of Kern Cattle and Double Barrel. His early semen sales and pregnancies he sired have been highlights in the 2022 and 2023 sale season. BNWZ Bougie 1588 is another 453 son who brought \$165,000 to Spruce Mountain and Riverbend Ranches where semen recently sold for \$1,588 a straw. Another son, BWNZ Nobility, was the \$110,000 high selling bull in the 2023 Angus Bull Sale in OKC. Her son Kern Freight Train sold two units of semen for \$10,000 each and is in the top 10 \$C non parent bulls in the breed today. This female’s proclivity for muscle and body mass in her offspring keep the Lady legacy alive and well as her calves also enjoy big boosts in DNA scores.

Direct sons and daughters of 453 are working for Linz Heritage, Herbst Farms, FC Angus, Nowatzke, EZ Angus, Pollard Farms, Kern Cattle, Dixie Valley, Spruce Mountain Ranch, Express Ranches, Wall Street Cattle, Rhoades Ranch, Butz-Hill, Double Barrel, KL3 Farms, Ingram Angus, Advantage Angus, Riverbend Ranches, White Rock Angus, Bosworth Farms, Ernst Cattle, Deer Valley Farms, Bullington Angus, and Hilltop Angus.



1st

LINZ LADY 8'72 453-1804



Swigart

UNIQUE PHENOTYPE, PEDIGREE, AND DATA!

TOP 1% PAP, RE, \$B, \$C



BWNZ NOBILITY \$110,000 Flush Brother to Lot 1
Sold in the 2023 Angus Bull Sale at OKC



BALDRIDGE JORDAN A.I. Service Sire owned with Double Barrel and Baldrige



Linz Lady 8'72 453-1804 ET

COW AAA 20297354 **DOB** 10/28/21 **TATTOO** 1804

Wilks 8'72
19397309

WAR Cavalry B063 Z044
FF Rita 5X87 of 3F21 Ten X

RB Lady Denver 167-453
18143482

EXAR Denver 2002B#
R B Lady Party 167-305

Connealy Cavalry 1149#
War CC&7 Z044 X029
A A R Ten X 7008 S A#
FF Rita 3F21 of 9Q23 Prophet

EXAR Upshot 0562B#
Exar Royal Lass 1067
Werner War Party 2417#
B A Lady 6807 305



CED	97
BW	100
WW	3
YW	8
DMI	96
YH	3
SC	55
DOC	34
HP	51
CEM	74
MILK	53
MW	4
MH	7
CW	1
MARB	4
RE	1
FAT	24
TEND	58



CED	BW	WW	YW	SC	HP	MILK	DOC	
1	4.5	84	147	0.66	12.8	28	24	
		5%	5%				25%	
CLAW	ANGLE	PAP	CW	MARB	RE	\$M	\$B	SC
0.45	0.40	-2.57	88	1.35	1.36	55	226	348
30%	15%	1%	1%	5%	1%		1%	1%

SELLING HALF INTEREST. A Beautiful daughter of 453 with a game changing PAP EPD in combination with her growth and carcass merit value. She currently ranks as the #2 \$Combination non parent female of the Wilks 8'72 daughters in the breed only behind another Linz owned female. Her AI service is to the Linz herd sire now leased to Genex who was the second high seller and most popular for phenotype in the 22 Baldrige sale. His full sister recently commanded \$65,000 for half in the Baldrige Female sale. Due 11-6-23 to Baldrige Jordan.



Lot **1A**

LINZ GREATER LADY

453-1848



Swigart

FEMININTY • EYE APPEAL • BALANCED EPD PROFILE



LINZ GREATER LADY 453-1855 Full Sister to Lot 1A
Purchased by EZ Angus and Rhoades Ranch in 2022 Sale



BALDRIDGE LIMITLESS A.I. Service Sire owned with Grimmius Cattle and Baldriges



Linz Greater Lady 453-1848 ET

COW AAA 20305048 DOB 11/13/21 TATTOO 1848

G A R Ashland
G A R Greater Good
19362382 G A R Sure Fire A5008

EXAR Denver 2002B#
RB Lady Denver 167-453
18143482 R B Lady Party 167-305

G A R Early Bird
Chair Rock Ambush 1018
G A R Sure Fire#
G A R Mandate A2011

EXAR Upshot 0562B#
EXAR Royal Lass 1067
Werner War Party 2417#
B A Lady 6807 305



CED	13
BW	52
WW	9
YW	6
DMI	99
YH	20
SC	21
DOC	27
HP	71
CEM	77
MILK	8
MW	48
MH	42
CW	7
MARB	2
RE	1
FAT	23
TEND	93



CED	BW	WW	YW	SC	HP	MILK	DOC	
12	1.3	79	144	1.08	9.5	36	22	
10%		10%	10%	35%		4%	35%	
CLAW	ANGLE	PAP	CW	MARB	RE	SM	SB	SC
0.56	0.42	1.66	69	1.40	1.24	75	206	342
	20%		10%	4%	2%	20%	3%	2%

Plenty of eye appeal and correctness in this bred heifer. Her full sister generated \$55,000 in our 2022 female sale to EZ Angus and Rhoades Ranch of California. This female offers a no holes EPD option and pushes both MB and RE together very well. Her AI service is to the Linz herd sire owned with Grimmius Cattle and Baldrige Performance Angus. He is one of the easiest to use Angus bulls in the breed today by pedigree, phenotype and on paper. Due 11-6-23 to Baldrige Limitless.



1B

LINZ LADY MAGNITUDE

453-2427



Swigart

1B

Linz Lady Magnitude 453-2427 ET

COW AAA 20589606 **DOB** 11/06/22 **TATTOO** 2427

MG Magnitude

19467117 MG Erroline 8E

EXAR Denver 2002B#

RB Lady Denver 167-453

18143482 R B Lady Party 167-305

Connealy Capitalist 028#

Deer Valley Rita 0274

HAYNES Outright 452#

M A G Erroline 1B

EXAR Upshot 0562B#

Exar Royal Lass 1067

Werner War Party 2417#

B A Lady 6807 305



CED	87
BW	97
WW	10
YW	2
DMI	96
YH	7
SC	69
DOC	76
HP	15
CEM	50
MILK	6
MW	4
MH	6
CW	1
MARB	5
RE	1
FAT	9
TEND	47



CED	BW	WW	YW	SC	HP	MILK	DOC
6	3.0	73	140	0.56	15.7	36	15
		20%	10%		15%	4%	
CLAW	ANGLE	PAP	CW	MARB	RE	SB	SC
0.36	0.44	-1.00	85	1.39	1.37	62	240
10%	30%	10%	2%	4%	1%	1%	1%

Lady Magnitude brings a fresh and different pedigree to the table via the Linz herd sire MG Magnitude who was the selection of the Illinois Bull Test sale from Linz and Grimmus Cattle in 2020. This female has a neat look about her with maternal features. A big RE female with top 10% EPDs for CLAW, PAP and Marbling.



Swigart

MG MAGNITUDE Sire of 1B owned with Grimmus Cattle

DIFFERENT PEDIGREE • BIG INDEXES • SWEET LOOK

TOP 1% RE, \$B, \$C



1C LINZ LADY JORDAN

453-2424



1C Linz Lady Jordan 453-2524 ET

COW AAA 20626572 DOB 12/05/22 TATTOO 2524

Mill Brae Identified 4031#
Baldrige Jordan
 20046714 Baldrige Isabel F047

EXAR Denver 2002B#
RB Lady Denver 167-453
 18143482 R B Lady Party 167-305

Koupals B&B Identity#
 Mill Brae Pro Blackcap 1092
 Connealy Confidence Plus#
 Baldrige Isabel B082
 EXAR Upshot 0562B#
 Exar Royal Lass 1067
 Werner War Party 2417#
 B A Lady 6807 305



CED	47
BW	89
WW	3
YW	3
DMI	97
YH	10
SC	18
DOC	22
HP	23
CEM	60
MILK	8
MW	4
MH	4
CW	1
MARB	3
RE	1
FAT	72
TEND	86



CED	BW	WW	YW	SC	HP	MILK	DOC	
9	3.2	81	146	1.45	14.5	37	27	
30%		10%	10%	20%	25%	3%	15%	
CLAW	ANGLE	PAP	CW	MARB	RE	SM	SB	SC
0.52	0.52	1.35	92	1.37	1.40	65	236	371
			1%	5%	1%		1%	1%

One of the first shots at a Baldrige Jordan heifer. Her sire has made the short list on many breeding programs for his incredible mating flexibility on paper and for phenotype. This female is a great example of that. With a pedigree that blends two of the great cows the Angus breed has ever had with Isabel Y69 and Lady 453 will make for a classic donor and cornerstone breeding piece.

1D Linz Lady Resilient 453-2909 ET

COW AAA 20618969 DOB 10/07/22 TATTOO 2909

Sitz Stellar 726D
Sitz Resilient 10208
 19057457 Sitz Miss Burgess 1856

EXAR Denver 2002B#
RB Lady Denver 167-453
 18143482 R B Lady Party 167-305

Mohnen Substantial 272#
 SITZ Pride 200B
 Sitz Top Game 561X#
 Sitz Miss Burgess 4381
 EXAR Upshot 0562B#
 Exar Royal Lass 1067
 Werner War Party 2417#
 B A Lady 6807 305



CED	46
BW	54
WW	2
YW	8
DMI	100
YH	2
SC	76
DOC	96
HP	13
CEM	22
MILK	19
MW	9
MH	5
CW	3
MARB	3
RE	2
FAT	28
TEND	90



CED	BW	WW	YW	SC	HP	MILK	DOC	
8	1.7	92	158	0.55	16.6	35	8	
35%		2%	2%	10%	10%			
CLAW	ANGLE	PAP	CW	MARB	RE	SM	SB	SC
0.59	0.48	0.88	83	1.37	1.20	69	208	339
			2%	5%	2%	35%	3%	2%

A daughter of the popular Resilient who like all her maternal sisters in this sale pack a punch for performance and carcass value. Of the 2,115 non parent daughters of Resilient, this is the only female with her level of MB and RE EPD in the whole bunch. Move the needle for carcass value here with a different pedigree.

TOP 1% RE, \$B, \$C

16 TRAITS IN THE TOP 16%

LOT 1D IS THE ONLY RESILIENT IN THE BREED FOR HER COMBINATION OF MARB & RE!



2 LINZ LADY SHERMAN

453-2469



Linz Lady Sherman 453-2469 ET

COW AAA 20619594 DOB 11/21/22 TATTOO 2469

Baldrige Sherman
19800451 Baldrige Isabel D753

EXAR Denver 2002B#
RB Lady Denver 167-453
18143482 R B Lady Party 167-305

A A R Ten X 7008 S A#
Green Garden Rita K078
Mill Bar Hickok 7242#
Baldrige Isabel Y69

EXAR Upshot 0562B#
Exar Royal Lass 1067
Werner War Party 2417#
B A Lady 6807 305



CED	32
BW	48
WW	5
YW	3
DMI	98
YH	20
SC	14
DOC	17
HP	9
CEM	60
MILK	84
MW	8
MH	21
CW	4
MARB	4
RE	2
FAT	54
TEND	60



CED	BW	WW	YW	SC	HP	MILK	DOC	
11	0.7	89	162	1.70	18.2	24	26	
15%		2%	2%	10%	3%		20%	
CLAW	ANGLE	PAP	CW	MARB	RE	SM	SB	SC
0.54	0.55	0.90	83	1.36	1.26	66	223	355
			2%	5%	1%		1%	1%



BALDRIGE SHERMAN Sire of Lots 2-2A

TOP 1% RE, \$B, \$C

SELLING CHOICE OF LOTS 2 OR 2A. These two daughters of the great 453 are sired by the \$65,000 Baldrige Sherman, owned by Riverbend Ranches and Baldrige Performance Angus. This blends two of the stoutest made cows in the breed together with Isabel D753 and Lady 453. A pedigree tie that puts like on like for body, muscle, and power. These two sisters bring increased heifer pregnancy, performance, and carcass value to the table. Selling only one of these two incredible Lady daughters.



2A LINZ LADY SHERMAN

453-2469



Linz Lady Sherman 453-2897 ET

COW AAA 20506940 DOB 10/03/22 TATTOO 2897

Baldrige Sherman
19800451 Baldrige Isabel D753

EXAR Denver 2002B#
RB Lady Denver 167-453
18143482 R B Lady Party 167-305

A A R Ten X 7008 S A#
Green Garden Rita K078
Mill Bar Hickok 7242#
Baldrige Isabel Y69
EXAR Upshot 0562B#
Exar Royal Lass 1067
Werner War Party 2417#
B A Lady 6807 305



CED	98
BW	100
WW	4
YW	3
DMI	97
YH	19
SC	43
DOC	11
HP	9
CEM	47
MILK	91
MW	19
MH	21
CW	2
MARB	25
RE	1
FAT	16
TEND	31



CED	BW	WW	YW	SC	HP	MILK	DOC	
-2	4.8	84	155	0.99	17.2	21	27	
		5%	3%		10%		15%	
CLAW	ANGLE	PAP	CW	MARB	RE	SM	SB	SC
0.38	0.39	0.15	85	0.83	1.45	79	206	346
10%	15%	25%	2%	35%	1%	15%	3%	1%



BALDRIDGE ISABEL D753 Paternal Grandam of Lots 2 or 2a

TOP 1% RE, \$C

ONE OF A KIND MATING

Selling choice of lots 2 or 2a



Grand Daughters of RB Lady Denver 167-453

Lot 3 LINZ LADY VINDICATE 2477



Swigart

GREAT LOOK • BIG DATA • DIFFERENT PEDIGREE

TOP 1% WW, YW, CW, \$B, \$C



LINZ LADY SIGNAL 453-97176 Donor Dam of Lot 3



LINZ LADY LIMITLESS 1818 \$27,500 Maternal Sister to Lot 3 purchased by Johnson Angus in 2022 sale



Linz Lady Vindicate 2477 ET

COW AAA 20607236 DOB 11/21/22 TATTOO 2477

Connealy National 390C
Connealy Vindicate 0366
 19986868 Binda of Conanga 833J

V A R Signal 7244
Linz Lady Signal 453-97176
 19654972 RB Lady Denver 167-453

Deer Valley Patriot 3222#
 Ellza of Conanga 390C
 Connealy Legendary 644L
 Brandie of Conanga 6932

Basin Payweight 1682#
 PF CC&7 Henrietta Pride 1044
 EXAR Denver 2002B#
 R B Lady Party 167-305



CED	70
BW	73
WW	1
YW	1
DMI	100
YH	8
SC	7
DOC	49
HP	5
CEM	11
MILK	56
MW	1
MH	2
CW	1
MARB	31
RE	2
FAT	47
TEND	66



CED	BW	WW	YW	SC	HP	MILK	DOC	
2	3.6	109	191	2.01	17.7	25	19	
		1%	1%	3%	4%			
CLAW	ANGLE	PAP	CW	MARB	RE	SM	SB	SC
0.44	0.41	1.54	112	0.81	1.23	67	226	360
25%	20%		1%	35%	2%		1%	1%

SELLING HALF INTEREST. Linz Lady Vindicate 2477 is a third generation Linz donor prospect and holds a unique data set with performance and foot improvement at high levels. As you sort nonparent females for her yearling weight and claw EPD she is one of only 150 in the breed to do so. Furthermore, she excels for SC, HP, CW and is a big RE female. Her maternal sister brought \$27,500 to Johnson Angus Ranch in CT out of the 2022 female sale.

SELLING HALF INTEREST



Swigart

LINZ LADY PLUS 453-0128 Donor Dam of Lot 4



INGRAM HEISMAN Full Brother to the Dam of Lot 4



Flush to Linz Lady Plus 453-0128

Bull of Buyers Choice

Connealy Confidence Plus#
Linz Lady Plus 453-0128
19670740 RB Lady Denver 167-453

Connealy Confidence 0100#
Elbanna of Conanga 1209
EXAR Denver 2002B#
R B Lady Party 167-305



DAM EPDS	CED	BW	WW	YW	SC	HP	MILK	DOC	
	8	2.9	85	161	1.31	13.8	32	24	
	30%		2%	1%	20%	25%	20%	15%	
	CLAW	ANGLE	PAP	CW	MARB	RE	SM	SB	SC
	0.38	0.32	2.45	90	0.97	1.24	75	211	349
	10%	1%		1%	10%	1%	15%	1%	1%

Selling a flush to the bull of buyers choice. Linz Lady Plus 453-0128 is the \$42,000 valued and jointly owned donor with KL3 Farms, Poplar Bluff, MO. She is the iconic mate between Confidence Plus and Lady 453 resulting in a high performance, foot improving, and big carcass valued donor with big index's in return. She is powerful like her mother and has sold heifer pregnancies through the 2022 KL3 Farms sale to both G3 Gobbell Farms and Kern Cattle Co.

FLUSH TO BULL OF BUYERS CHOICE

TOP 1% YW, ANGLE, CW, RE, \$B, \$C



Swigart

LINZ LADY PAYWEIGHT 453-7195 Donor Dam of Lots 5-5C



Swigart

LINZ FC LADY SALVATION 2005 \$25,000 daughter of 7195
Purchased by Kern Cattle in 2022 sale



Swigart

LINZ LADY REGIMENT 7195-1922 \$16,000 daughter of 7195
Purchased by KL3 Farms in 2022 sale



Swigart

LINZ LADY CHANGEMAKER 1927 \$15,000 daughter of 7195
Purchased by Spruce Mountain in 2022 sale



Swigart

LINZ LADY ENHANCE 7195-0506
Daughter of 7195 owned by FB Genetics



Daughters of Linz Lady Payweight 453-7195

5

LINZ LADY SHERMAN

7195-2404



DENSE MADE • DEEP CENTERED

TOP 1% WW • TOP 3% CW, RE, \$C



Linz Lady Sherman 7195-2404 ET

COW AAA 20593112 **DOB** 11/01/22 **TATTOO** 2404



Gardens Cache
Baldrige Sherman
 19800451 Baldrige Isabel D753

Basin Payweight 1682#
Linz Lady Payweight 453-7195
 18925979 RB Lady Denver 167-453

A A R Ten X 7008 S A#
 Green Garden Rita K078
 Mill Bar Hickok 7242#
 Baldrige Isabel Y69
 Basin Payweight 006S#
 21AR O Lass 7017
 EXAR Denver 2002B#
 R B Lady Party 167-305

CED	47
BW	72
WW	1
YW	6
DMI	100
YH	19
SC	33
DOC	12
HP	22
CEM	32
MILK	9
MW	5
MH	18
CW	2
MARB	15
RE	1
FAT	23
TEND	60



CED	BW	WW	YW	SC	HP	MILK	DOC	
5	3.0	94	158	1.06	15.2	35	30	
		1%	2%		20%	10%	10%	
CLAW	ANGLE	PAP	CW	MARB	RE	SM	SB	SC
0.44	0.49	-1.22	79	1.04	1.17	78	190	324
25%		10%	3%	20%	3%	15%	10%	3%

Starting this quartet of daughters of the highly proven Linz Lady Payweight 453-7195 is a daughter of the \$65,000 Baldrige Sherman. Lady 7195 was the second high seller of the 2018 Linz Heritage sale to FC Angus of IL for \$100,000. Her daughters are working for Kern, KL3 Farms, Spruce Mountain, and FB Genetics. This heifer is moderate and thick with an excellent line for management EPD's.



Linz Lady Horizon 2338 ET
COW AAA 20647830 DOB 09/15/22 TATTOO 2338

G A R Sunbeam
PCC Horizon 025
19845469 Pohlman Barbara 8178

G A R Sunrise#
G A R Ingenuity 3132
Connealy Confidence Plus#
Pohlman Barbara 6861

Basin Payweight 1682#
Linz Lady Payweight 453-7195
18925979 RB Lady Denver 167-453

Basin Payweight 006S#
21AR O Lass 7017
EXAR Denver 2002B#
R B Lady Party 167-305



CED	BW	WW	YW	SC	HP	MILK	DOC	
8	0.6	73	135	0.70	13.3	44	25	
35%	35%	20%	15%		35%	1%	20%	
CLAW	ANGLE	PAP	CW	MARB	RE	SM	SB	SC
0.48	0.38	0.78	73	0.85	0.97	74	184	313
	10%		10%	35%	15%	25%	10%	5%



CED	7
BW	4
WW	18
YW	17
DMI	92
YH	3
SC	57
DOC	26
HP	23
CEM	12
MILK	1
MW	27
MH	12
CV	6
MARB	23
RE	12
FAT	29
TEND	80



Linz Lady Exemplify 1011 ET
COW AAA 20297364 DOB 12/13/21 TATTOO 1011

Connealy Confidence Plus#
Linz Exemplify 71124
19265123 M A R Erica 1617

Connealy Confidence 0100#
Elbanna of Conanga 1209
R B Tour Of Duty 177#
MAR Erica Rito 1402

Basin Payweight 1682#
Linz Lady Payweight 453-7195
18925979 RB Lady Denver 167-453

Basin Payweight 006S#
21AR O Lass 7017
EXAR Denver 2002B#
R B Lady Party 167-305



CED	BW	WW	YW	SC	HP	MILK	DOC		
6	1.8	78	133	1.10	11.5	35	26		
		15%	15%	35%		10%	20%		
CLAW	ANGLE	PAP	CW	MARB	RE	SM	SB	SC	
0.43	0.40	2.72	67	0.92	1.22	76	183	313	
	25%	15%		15%	25%	2%	20%	10%	5%



CED	15
BW	13
WW	14
YW	39
DMI	75
YH	38
SC	42
DOC	44
HP	51
CEM	39
MILK	12
MW	34
MH	29
CV	10
MARB	27
RE	2
FAT	35
TEND	44

AI to Riverbend Black Label on 06/01/23. Exposed to Riverbend Stepping Out K830 from 06/08/23 to 07/10/23.



Linz Lady Conclusion 2931 ET
COW AAA 20508381 DOB 10/23/22 TATTOO 2931

K C F Bennett Summation
V A R Conclusion 0234
19697625 Sandpoint Blackbird 8809

K C F Bennett Consent Y75#
Thomas Patricia 9705
Connealy Onward#
Riverbend Blackbird 4301

Basin Payweight 1682#
Linz Lady Payweight 453-7195
18925979 RB Lady Denver 167-453

Basin Payweight 006S#
21AR O Lass 7017
EXAR Denver 2002B#
R B Lady Party 167-305



CED	BW	WW	YW	SC	HP	MILK	DOC	
9	1.8	81	142	1.49	7.8	39	22	
30%		10%	10%	15%		2%	35%	
CLAW	ANGLE	PAP	CW	MARB	RE	SM	SB	SC
0.50	0.48	-0.07	63	0.78	1.12	57	164	270
		25%	20%		4%		20%	25%



CED	24
BW	35
WW	17
YW	23
DMI	80
YH	51
SC	18
DOC	39
HP	70
CEM	40
MILK	7
MW	32
MH	54
CV	21
MARB	46
RE	4
FAT	13
TEND	98



Linz Lady Ident 9210-2710 ET
COW AAA 20512564 DOB 07/21/22 TATTOO 2710

Koupals B&B Identity#
Mill Brae Identified 4031#
17928462 Mill Brae Pro Blackcap 1092

Sitz Upward 307R#
B&B Erica 605#
GAR-EGL Protege#
Mill Brae FL Blackcap 5002

S Whitlock 179#
Linz Lady Whitlock 453-9210
19416591 RB Lady Denver 167-453

S Chisum 6175#
S Pride Anna 709#
EXAR Denver 2002B#
R B Lady Party 167-305



CED	BW	WW	YW	SC	HP	MILK	DOC	
7	1.6	75	139	1.89	11.6	31	19	
		15%	10%	5%		20%		
CLAW	ANGLE	PAP	CW	MARB	RE	SM	SB	SC
0.55	0.44	1.69	75	1.21	0.97	71	211	345
	30%		5%	10%	15%	30%	2%	1%



CED	44
BW	49
WW	21
YW	10
DMI	63
YH	21
SC	13
DOC	57
HP	52
CEM	43
MILK	28
MW	39
MH	44
CV	6
MARB	8
RE	18
FAT	48
TEND	61



LINZ EXEMPLIFY 71124 Owned with Antczak and Wall Street

LINZ EXEMPLIFY PROGENY RECORD

1053 BW@100

787 WW@101

396 YW@101

266 IMF@100

267 RE@267

1104 GENOMIC PROGENY

LINZ HERITAGE ANGUS

Direct to Consumer



B E E F

With a story like no other and second to none quality of Linz Heritage Angus beef, The Linz Shop has quickly become a real competitor in the world of direct to consumer gourmet foods. We have seen tremendous growth and interest in our online program.

What's better than a beautiful black Linz cooler containing some of the best Angus beef in the world, showing up at your loved one's door just in time for Christmas? Not much. Bulk gifting has also become one of our specialties with our customer list growing larger by the year. Whether it's friends and family or business owners across the country, Linz beef has become the go-to choice for bulk gifts. We are happy to work with smaller orders and have experience with corporate needs as well, sending out several hundred personalized gift packs.

As always, we are proud to say we offer the highest of quality Linz Angus beef that is aged to perfection. We offer both wet-aged for the traditional steak lover or our old-world dry-aged beef to kick things up a notch. The Linz Shop's product offering doesn't stop with just the best Black Angus money can buy. Why not accompany the best steak with the best provisions? We stock everything from the rarest Tristan lobster tails, Oishii shrimp, gourmet sausages and more. Our goal is to create the ultimate dining experience right in your own home.

As the program continues to grow, we are excited for what's ahead in 2023. We're working with top chefs and influencers around the country to get the word out. Everything from reward programs to monthly meat boxes and more are headed for The Linz Shop. Look out big-box retailers, carnivores across America are experiencing true Midwest Black Angus beef and they are falling in love with it. Check out The Linz Shop today at ShopLinz.com.



SHOPLINZ.COM



Daughters of Ruth S S D180

7A

LINZ RUTH IDENTIFIED 2321



RUTH SS D180 Donor Dam of Lots 7A & 7B



Linz Ruth Identified 2321 ET COW AAA 20648807 DOB 07/22/22 TATTOO 2321



Koupals B&B Identity#
Mill Brae Identified 4031#
17928462 Mill Brae Pro Blackcap 1092

MAR Innovation 251#
Ruth S S D180
18460749 Ruth S S Z63

Sitz Upward 307R#
B&B Erica 605#
GAR-EGL Protege#
Mill Brae FL Blackcap 5002

Connealy Impression#
MAR Final Kahuna 856#
SydGen Mandate 6079#
Ruth S S X73

CED	84
BW	68
WW	29
YW	6
DMI	78
YH	38
SC	15
DOC	58
HP	3
CEM	87
MILK	31
MW	28
MH	12
CW	9
MARB	3
RE	28
FAT	68
TEND	9



CED	BW	WW	YW	SC	HP	MILK	DOC	
4	1.4	76	139	1.80	16.5	30	14	
		15%	10%	10%	10%	25%		
CLAW	ANGLE	PAP	CW	MARB	RE	SM	SB	SC
0.60	0.40	2.71	79	1.37	0.80	69	216	349
	15%		3%	5%	30%	35%	2%	1%

Ruth S S D180 was the \$20,000 valued female from the Sankeys 6N Sale who has been a generator of high valued male and females with the right look. D180 has 3 BW@87, 3WW@102, 2 IMF@105 and 2 RE@106. Her sons are working for Werning Simmental, Kroupa Cattle, Umbargers, Reinhardts and Genex. Daughters reside at Lylester Farms, Express, and Gutweins.



HOFFMAN MIDWEST 024 \$70,000 Son of D180
Owned by Werning Simmental and Kroupa Cattle Co



LINZ PATRIOT \$50,000 Son of D180
Purchased by Umbarger and Reinhardt in 2020 sale



LINZ CROWN POINT 9705 \$39,000 Son of D180
Purchased by Genex in 2020 sale



7B LINZ RUTH GOALKEEPER 2322



Swigart



Linz Ruth Goalkeeper 2322 ET
 COW AAA 20647834 DOB 06/28/22 TATTOO 2322

SydGen Enhance
Baldrige SR Goalkeeper
 19356243 Baldrige Isabel E030

SydGen Exceed 3223#
 SydGen Rita 2618
 Connealy Confidence Plus#
 Baldrige Isabel Y69

MAR Innovation 251#
Ruth S S D180
 18460749 Ruth S S Z63

Connealy Impression#
 MAR Final Kahuna 856#
 SydGen Mandate 6079#
 Ruth S S X73



CED	61
BW	45
WW	9
YW	1
DMI	91
YH	53
SC	33
DOC	24
HP	12
CEM	99
MILK	71
MW	3
MH	14
CW	4
MARB	9
RE	1
FAT	48
TEND	82



CED	BW	WW	YW	SC	HP	MILK	DOC	
5	1.1	82	158	1.18	14.7	25	27	
		10%	2%	30%	20%		15%	
CLAW	ANGLE	PAP	CW	MARB	RE	SM	SB	SC
0.45	0.29	4.01	81	1.12	1.26	51	222	339
30%	1%	3%	15%	1%		1%	2%	



Swigart

BALDRIDGE SR GOALKEEPER Sire of Lot 7B

TOP 1% ANGLE, RE, \$B



LINZ RUTH CAVALRY D180-0830 \$25,000 Daughter of D180
 Purchased by Lylester Farms in 2021 sale



RUTH ICONIC D180-1742 \$15,000 Daughter of D180
 Purchased by Express Ranches in 2022 sale



LINZ RUTH GOALKEEPER 1712 Full Sister to Lot 7B
 Purchased by Fred Gutwein in 2022 sale



Daughters of Ruth S S D180



TOP 1% RADG, \$B, \$C



Linz Ruth Exemplify 2923 ET
COW AAA 20634033 DOB 10/18/22 TATTOO 2923

Connealy Confidence Plus#
Linz Exemplify 71124
19265123 M A R Erica 1617

WAR Cavalry B063 Z044
Linz Ruth Cavalry D180-0417
20167272 Ruth S S D180

Connealy Confidence 0100#
Elbanna of Conanga 1209
R B Tour Of Duty 177#
MAR Erica Rito 1402

Connealy Cavalry 1149#
War CC&7 Z044 X029
MAR Innovation 251#
Ruth S S Z63

CED	82
BW	70
WW	6
YW	3
DMI	88
YH	7
SC	88
DOC	16
HP	35
CEM	33
MILK	73
MW	3
MH	7
CW	4
MARB	2
RE	3
FAT	29
TEND	24



CED	BW	WW	YW	SC	HP	MILK	DOC	
2	2.4	85	158	-0.06	13.2	22	30	
		4%	2%		35%		10%	
CLAW	ANGLE	PAP	CW	MARB	RE	\$M	\$B	SC
0.55	0.51	0.85	82	1.56	1.20	47	244	363
			2%	2%	2%		1%	1%



EYE APPEAL SUPERIOR PEDIGREE



Linz Ruth Vindicate 2486 ET
COW AAA 20607235 DOB 11/21/22 TATTOO 2486

Connealy National 390C
Connealy Vindicate 0366
19986868 Binda of Conanga 833J

Connealy Confidence Plus#
Linz Ruth Plus D180-0237
19703081 Ruth S S D180

Deer Valley Patriot 3222#
Elza of Conanga 390C
Connealy Legendary 644L
Brandie of Conanga 6932

Connealy Confidence 0100#
Elbanna of Conanga 1209
MAR Innovation 251#
Ruth S S Z63

CED	59
BW	71
WW	7
YW	4
DMI	90
YH	48
SC	77
DOC	42
HP	72
CEM	46
MILK	58
MW	8
MH	26
CW	5
MARB	4
RE	2
FAT	52
TEND	79



CED	BW	WW	YW	SC	HP	MILK	DOC	
6	2.4	81	149	0.42	8.2	25	25	
		10%	5%				20%	
CLAW	ANGLE	PAP	CW	MARB	RE	\$M	\$B	SC
0.50	0.49	3.20	76	1.23	1.20	53	216	333
			5%	10%	2%		2%	2%

WATCH AND BID ONLINE

Call Brooklyn Graham for details: (812) 530-0748
Brooklyn's email: brooklyn@liveauctions.tv.



LINZ HERITAGE ANGUS

Calf Buy Back



PROGRAM

Linz Heritage Angus has invested in providing you with the time-tested genetics that proves desirable all the way to the high-end steak consumer, and now we want to invest in you! We stand behind the genetics we offer, and provide you the opportunity to join us within the conception to plate business. Linz Heritage Angus has the expertise, ability, and logistics required to facilitate this program, and when you buy a bull from Linz Heritage Angus this opens the doors for you to participate by having an Linz Heritage Angus representative bid on your calves.

BENEFITS

- Calf suppliers will receive multiple options when it comes to participation, such as: 100% breeder-retained ownership, 50/50 ownership, or even financed options
- Linz will supply transportation, feeding protocols, and collection of carcass data.
- Breeder receives information to help verify, or improve, genetic decisions and aides in increasing economic herd potential.
- All bulls sold through the Linz Bull Sale are eligible for the Linz Buyback Program.

REQUIREMENTS

- Must use Linz Heritage Angus bulls in your program. You can purchase the bulls through our sales, purchasing private treaty from Linz Heritage Angus, or by utilizing AI semen available from our bulls at stud. Let us become an asset to your operation by partnering with us from this conception to consumption trail!



LINZHERITAGEANGUS.COM

Fred Linz - Owner: Linz Heritage Angus & Meats by Linz 708.259.1206 or Anthony Randall - Cattle Procurement Manager 307.620.2890



9

LINZ LADY JORDAN 3046



TOP 1% RE, \$C • TOP 2% CW, \$B • TOP 3% CLAW, \$M, \$W



LINZ LADY OPPORTUNITY 3306-7173 \$65,000 Donor Dam of Lot 9 owned by Linz and Herbster



LINZ LADY EXEMPLIFY 1026 \$21,000 maternal sister to lot 9 purchased by FB Genetics in 2022 sale



Linz Lady Jordan 3046 ET

COW AAA 20633860 DOB 01/17/23 TATTOO 3046

Mill Brae Identified 4031#
Baldrige Jordan
 20046714 Baldrige Isabel F047

Freys Opportunity 148A
RB Lady Opportunity 3306-7173
 18907488 RB Lady Confidence 890-3306

Koupals B&B Identity#
 Mill Brae Pro Blackcap 1092
 Connealy Confidence Plus#
 Baldrige Isabel B082
 BSAR Opportunity 9114
 F A R Princess 214X#
 Connealy Confidence 0100#
 R B Lady Standard 305-890



CED	60
BW	58
WW	21
YW	14
DMI	62
YH	41
SC	97
DOC	31
HP	40
CEM	69
MILK	43
MW	69
MH	50
CW	8
MARB	29
RE	1
FAT	34
TEND	93

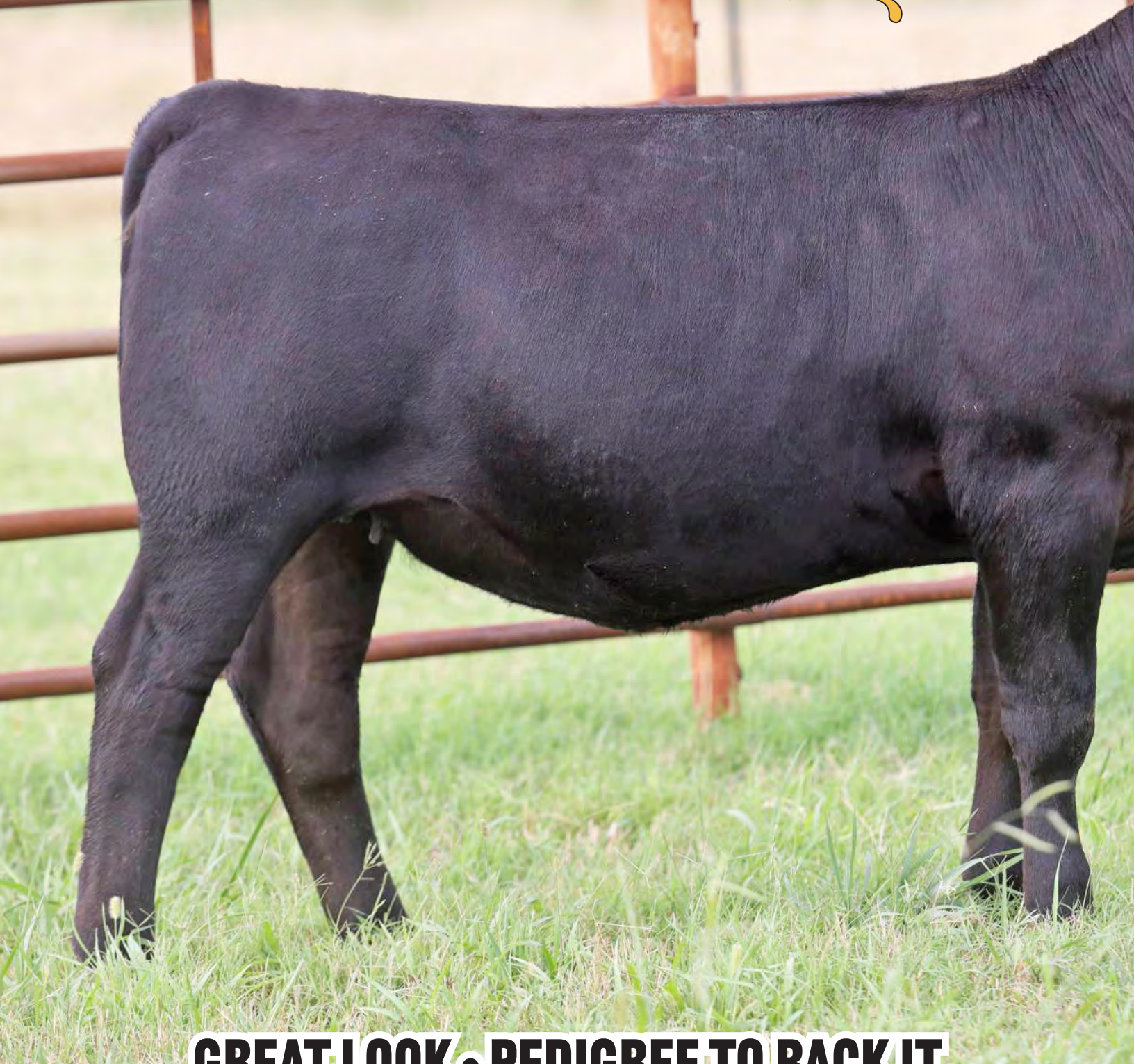


CED	BW	WW	YW	SC	HP	MILK	DOC	
7	1.8	78	141	-0.15	12.2	34	21	
		15%	10%			10%		
CLAW	ANGLE	PAP	CW	MARB	RE	SM	SB	SC
0.33	0.39	2.74	84	0.96	1.35	88	214	366
3%	15%		2%	25%	1%	3%	2%	1%

An early opportunity at a Jordan sired female out of the \$65,000 donor dam owned with Herbster Angus Farm, Linz Lady Opportunity 3306-7173. This female is good to the eye with maternal power about her. On paper she is unique in her big rib eye and \$Maternal index. Only 80 females in the breed can match her on those two important matters. Her donor dam offers pedigree diversity on her top side and carries along phenotype advantage through the generations. Use this female as a foot improver as well ranking in the top 3% for Claw EPD.



#10 LINZ LADY ALT ROUTE 2500



GREAT LOOK • PEDIGREE TO BACK IT
TOP 200 RE EPD (1.53) IN THE BREED!



LINZ LADY DEADWOOD 8128-2002 Maternal sister to lot 10 owned by Fred Gutwein, IN



LHA LADY RAMPAGE 4202-6113 \$20,000 Granddam of Lot 10 purchased by High Roller in 2022 sale



CCA ALTERNATE ROUTE \$52,000 sire of lot 10 owned by Grimmius Cattle



Linz Lady Alt Route 2500 ET
COW AAA 20607214 DOB 11/29/22 TATTOO 2500



Baldrige Alternative E125
CCA Alternate Route
 19814035 CCA Southside D25

Gaffney Game Changer 371
Linz Lady Changer 6113-8128
 19610808 LHA Lady Rampage 4202-6113

Poss Easy Impact 0119
 Baldrige Blackbird A030
 K C F Bennett Southside#
 Jamesland S V F Reba 911J
 Connealy Confidence 0100#
 R B Lady Standard 305-890
 Quaker Hill Rampage 0A36#
 CAV Lady Identity 202-4202

CED	50
BW	85
WW	11
YW	13
DMI	57
YH	15
SC	11
DOC	79
HP	51
CEM	40
MILK	35
MW	63
MH	28
CW	4
MARB	15
RE	1
FAT	1
TEND	53



CED	BW	WW	YW	SC	HP	MILK	DOC	
9	1.7	76	137	1.26	12.1	28	11	
30%		15%	15%	25%				
CLAW	ANGLE	PAP	CW	MARB	RE	SM	SB	SC
0.50	0.52	0.68	80	0.96	1.53	75	221	362
			3%	25%	1%	20%	1%	1%

One of the few Alternate Route daughters to sell at auction by our dam who recorded 1 BW@93, 1 WW@105 and 1 YW@105 before entering the donor pen. Her sire was a phenotype standout that we took a run after in the 2021 sale season and sold to Grimmius Cattle for \$52,000 for half interest. The calves are stout and impressive to see. This female's grandmother was a good producer selling a \$22,500 daughter to 4 Sons, and a \$20,000 daughter to Double Barrel Angus.



Linz Heritage Angus

These two females are out of first calf heifers straight from the Connealy cow herd. Sired by two fresh and progressive sires with super look and a big EPD set. These two heifers have donor potential and will be stand outs on sale day.



TOP 50 IN THE BREED FOR DOC WITH 39 EPD!

11

Linz Elina Exemplify 2409

COW AAA 20584280 DOB 11/02/22 TATTOO 2409

Connealy Confidence Plus#
Linz Exemplify 71124
19265123 M A R Erica 1617

Connealy Southwind 6176
Elina of Conanga 038X
20121814 Elizabeth of Conanga 897

Connealy Confidence 0100#
Elbanna of Conanga 1209
R B Tour Of Duty 177#
MAR Erica Rito 1402
K C F Bennett Southside#
Black Ceyla of Conanga 0267
Connealy Consensus#
Elzie of Conanga 3205



CED	63
BW	60
WW	1
YW	4
DMI	89
YH	26
SC	56
DOC	1
HP	28
CEM	3
MILK	38
MW	14
MH	28
CW	5
MARB	27
RE	3
FAT	28
TEND	2



CED	BW	WW	YW	SC	HP	MILK	DOC	
7	0.7	93	160	0.68	14.9	28	39	
		1%	2%		20%		1%	
CLAW	ANGLE	PAP	CW	MARB	RE	SM	SB	SC
0.60	0.52	3.31	78	0.91	1.09	81	194	333
			4%	30%	5%	10%	5%	2%



TOP 1% WW, CW, \$W TOP 2% YW, \$C

12

Linz Enzara Thedford 2434

COW AAA 20593241 DOB 11/07/22 TATTOO 2434

Bar R Jet Black 5063
Hoffman Thedford
19820180 HA Rito Lady 3839#

Yon Chattooga E46
Enzara of Conanga 051R
20131441 Enza of Conanga 794

Connealy Black Granite#
Bar R Iris Anita 0113
KG Solution 0018#
HA Rito Lady 0622
Connealy Comrade 1385#
Yon Sally C200
Connealy Confidence Plus#
Emza of Conanga 5379



CED	55
BW	81
WW	1
YW	8
DMI	67
YH	23
SC	47
DOC	48
HP	24
CEM	29
MILK	15
MW	22
MH	6
CW	1
MARB	51
RE	15
FAT	22
TEND	5



CED	BW	WW	YW	SC	HP	MILK	DOC	
9	2.6	93	159	1.11	14.0	34	21	
		1%	2%	35%	30%	10%		
CLAW	ANGLE	PAP	CW	MARB	RE	SM	SB	SC
0.57	0.39	1.40	89	0.76	0.78	81	201	342
		15%	1%		35%	10%	4%	2%



13 LINZ HENRIETTE PRIDE 2492



TOP 1% \$M

13 **Linz Henriette Pride 2492 ET**
COW AAA 20609118 DOB 11/22/22 TATTOO 2492

Connealy Confidence Plus#
Baldrige Limitless
 19576523 Baldrige Isabel D753

Spring Cove Reno 4021#
SMR Henrietta Pride 8511
 19364994 Vintage Henrietta Pride 5010

Connealy Confidence 0100#
 Elbanna of Conanga 1209
 Mill Bar Hickok 7242#
 Baldrige Isabel Y69
 KM Broken Bow 002#
 Spring Cove Liza 021
 V A R Discovery 2240#
 PF CC&7 Henrietta Pride 1044



CED	76
BW	80
WW	3
YW	15
DMI	81
YH	25
SC	32
DOC	8
HP	27
CEM	36
MILK	17
MW	45
MH	49
CW	6
MARB	12
RE	5
FAT	40
TEND	35

	CED	BW	WW	YW	SC	HP	MILK	DOC	
	5	2.0	87	146	0.92	15.4	32	30	
			3%	10%		15%	15%	10%	
	CLAW	ANGLE	PAP	CW	MARB	RE	SM	SB	SC
	0.39	0.46	2.96	71	0.97	1.09	95	187	338
	15%			10%	25%	5%	1%	10%	2%

First of two Baldrige Limitless daughters, our \$60,000 herd sired owned with Grimmus Cattle and Baldrige. This is a fourth generation 643T daughter whose data, phenotype and certainly pedigree should grant her donor access soon. First chance at owning Limitless daughters right here.



SMR HENRIETTA PRIDE 8511 \$25,000 Donor Dam of Lot 13
 Purchased by Beartooth Angus in 2022 sale



LINZ HENRIETTA PRIDE 1955 \$25,000 Maternal Sister of Lot 13
 Purchased by Four Sons Angus in 2022 sale



VINTAGE HENRIETTA PRIDE 5010 \$340,000 Valued
 Granddam of Lot 13



LINZ LADY BLASTER 453-9204 Granddam of Lot 14

Lot 14

TOP 1% \$M, DOC
TOP 2% CLAW, ANGLE, RE
TOP 3% \$W, \$C

14

Linz Lady Limit 0840-2442

COW AAA 20632930 DOB 11/11/22 TATTOO 2442

Connealy Confidence Plus#
Baldrige Limitless
 19576523 Baldrige Isabel D753

Hart Outlier 7033
Linz Lady Outlier 9204-0840
 19972089 Linz Lady Blaster 453-9204

Connealy Confidence 0100#
 Elbanna of Conanga 1209
 Mill Bar Hickok 7242#
 Baldrige Isabel Y69
 HAYNES Outright 452#
 Hart Liberty Belle 5315
 Bruns Blaster
 RB Lady Denver 167-453



CED	51
BW	47
WW	11
YW	24
DMI	98
YH	17
SC	83
DOC	2
HP	34
CEM	46
MILK	15
MW	58
MH	41
CW	11
MARB	12
RE	2
FAT	82
TEND	78



CED	BW	WW	YW	SC	HP	MILK	DOC	
9	0.2	74	128	0.29	13.3	33	34	
30%	30%	20%	25%	35%	10%	1%		
CLAW	ANGLE	PAP	CW	MARB	RE	SM	SB	SC
0.31	0.33	2.31	63	1.14	1.22	99	178	330
2%	2%		20%	15%	2%	1%	10%	3%

Yet another descendant of the great Lady 453, the highest money earner at Linz Heritage. With a superior data set in management and carcass values this female also brings a different pedigree from the top 2/3's of her tree to work with to make mating more flexible.

15

Linz Susie Annuity 2335 ET

COW AAA 20635487 DOB 09/09/22 TATTOO 2335

Deer Valley Growth Fund
Car Don Annuity 114
 19720973 CAR Don Blackbird 935

KB-Full Measure C40
ACC Susie 9056
 19408621 LHR Susie 6610-3224

Basin Payweight 1682#
 Deer Valley Rita 36113
 Quaker Hill Rampage 0A36#
 EF Blackbird 3241
 Plattemere Weigh Up K360#
 KB-Emma-Ten X-B02
 B/R Future Direction 4268
 LHR Susie 6610



CED	47
BW	69
WW	1
YW	2
DMI	100
YH	3
SC	33
DOC	7
HP	62
CEM	5
MILK	18
MW	6
MH	4
CW	2
MARB	8
RE	23
FAT	47
TEND	82



CED	BW	WW	YW	SC	HP	MILK	DOC	
7	2.1	96	167	1.21	11.0	33	26	
	1%	1%	30%			10%	20%	
CLAW	ANGLE	PAP	CW	MARB	RE	SM	SB	SC
0.40	0.37	2.90	81	1.07	0.83	73	194	325
15%	10%		3%	15%	25%	25%	5%	3%

These two ET daughters by, ACC Susie 9056, are high performance heifers by two popular sires for body type, correctness, and power. Susie 9056 is a new donor who is getting use here as she is tremendous for performance and carcass value at a 1.56 MB and top 15% Claw.

15A

Linz Susie River 2359 ET

COW AAA 20635570 DOB 09/20/22 TATTOO 2359

Ellingson Three Rivers 8062
Ellingson Deep River
 19853339 EA Primrose 5083

KB-Full Measure C40
ACC Susie 9056
 19408621 LHR Susie 6610-3224

Ellingson Homestead 6030
 EA Emblynette 6279
 Koupal Advance 28#
 EA Primrose 3102#
 Plattemere Weigh Up K360#
 KB-Emma-Ten X-B02
 B/R Future Direction 4268
 LHR Susie 6610



CED	
BW	
WW	
YW	
DMI	
YH	
SC	
DOC	
HP	
CEM	
MILK	
MW	
MH	
CW	
MARB	
RE	
FAT	
TEND	



CED	BW	WW	YW	SC	HP	MILK	DOC	
5	3.0	83	154	1.21	16.5	31	18	
		5%	3%	30%	10%	20%		
CLAW	ANGLE	PAP	CW	MARB	RE	SM	SB	SC
0.42	0.40	0.78	75	1.11	0.75	64	205	330
20%	15%		5%	15%	35%		3%	3%



Swigart
MAR ERICA 1617 Donor Dam of Lot 16

16

Linz Erica Identified 2376 ET
COW AAA 20648716 DOB 09/12/22 TATTOO 2376

Koupals B&B Identity#
Mill Brae Identified 4031#
17928462 Mill Brae Pro Blackcap 1092

Sitz Upward 307R#
B&B Erica 605#
GAR-EGL Protege#
Mill Brae FL Blackcap 5002
Werner War Party 2417#
B A Lady 6807 305
A A R Ten X 7008 S A#
Highwood Erica Rito 209

R B Tour Of Duty 177#
M A R Erica 1617
18499813 MAR Erica Rito 1402



CED	BW	WW	YW	SC	HP	MILK	DOC
3	2.4	78	144	0.25	14.1	18	20
		15%	10%		30%		
CLAW	ANGLE	PAP	CV	MARB	RE	SB	SC
0.65	0.53	4.64	81	1.08	0.83	48	212 323
			3%	15%	25%	2%	4%

Linz Erica Identified 2376 is a maternal sister to the \$150,000 top seller of the 2019 Linz bull sale to Antczak Angus, and Wallstreet for 2/3's interest. In the 2021 female sale the leadoff female by Confidence Plus and 1617 brought \$60,000 for half interest going to Herbster Angus Farm in NE. Maternal sisters to lot 16 are working for Express Ranches and Spruce Mountain Ranch.



CED	66
BW	56
WW	6
YW	3
DMI	80
YH	5
SC	91
DOC	44
HP	23
CEM	48
MILK	91
MW	5
MH	5
CW	1
MARB	18
RE	10
FAT	49
TEND	2



LINZ ERICA PLUS 1617-0818 \$60,000 (Half Interest) Maternal Sister to Lot 16
Purchased by Herbster Angus in 2021 sale

TOP 1% \$F • TOP 2% \$B

you're invited!

7th ANNUAL
BULL SALE

THURSDAY • JANUARY 18 • 2024
AT BLUE BRANCH RANCH



LINZ EXEMPLIFY 71124 Maternal Brother to Lot 16
Owned with Antczak and Wall Street



TOP 1% \$C



Linz Arkdale Pride 3029

COW AAA 20624998 DOB 01/03/23 TATTOO 3029

Linz Exemplify 71124
19265123 M A R Erica 1617

SydGen Exceed 3223#
Silveiras Arkdale Pride 8010
19135036 Silveiras Arkdale Pride 6024

Connealy Confidence Plus#
Connealy Confidence 0100#
Elbanna of Conanga 1209
R B Tour Of Duty 177#
MAR Erica Rito 1402
SydGen Googol
SydGen Forever Lady 1255
2 Bar Assault 1876 of SB
Silveiras Arkdale Pride 4003



CED	61
BW	61
WW	7
YW	17
DMI	61
YH	23
SC	6
DOC	36
HP	56
CEM	11
MILK	48
MW	18
MH	13
CW	10
MARB	5
RE	19
FAT	77
TEND	65



CED	BW	WW	YW	SC	HP	MILK	DOC		
6	1.3	81	143	2.02	12.2	26	26		
		10%	10%	3%				20%	
CLAW	ANGLE	PAP	CW	MARB	RE	SM	SB	SC	
0.45	0.34	1.74	70	1.44	0.81	73	215	352	
		30%	3%	10%	4%	30%	25%	2%	1%



TOP 1% WW & YW



Linz Erica Intimidator 2334 ET

COW AAA 20651747 DOB 09/08/22 TATTOO 2334

V A R Intimidator 0486
19824582 Baldrige Blackbird E140

ECO Lombardi 1512
Powell Erica 8397
19243736 Williams Prop Erica 255 -895

SydGen Enhance
S S Miss Daybreak K011 3K17#
Poss Easy Impact 0119
Baldrige Blackbird A030
V A R Discovery 2240#
RB Lady 7125-890-2170
G A R Prophet#
Williams Erica 812



CED	25
BW	41
WW	1
YW	2
DMI	99
YH	31
SC	70
DOC	10
HP	24
CEM	72
MILK	35
MW	3
MH	9
CW	2
MARB	18
RE	4
FAT	28
TEND	85



CED	BW	WW	YW	SC	HP	MILK	DOC	
9	2.4	104	180	0.43	13.9	27	25	
		1%	1%				20%	
CLAW	ANGLE	PAP	CW	MARB	RE	SM	SB	SC
0.41	0.48	1.59	89	1.09	1.02	72	209	343
		20%	1%	15%	10%	30%	2%	2%

DAUGHTER OF POWELL ERICA 8397

Of the many Williams and Powell Erica's that have surfaced to the top of EPD sorts each week perhaps none have been more potent than the Lombardi x 895 cross. Massive data and big time pedigree here from the same family that has brought forth Jonesboro, Hollywood, and Promogen.

7th Annual FEMALE SALE

SUNDAY, AUGUST 20, 2023 • 12 PM CDT

Sale held at Linz Heritage Angus at Blue Branch Ranch - 10370 Blue Branch Ranch Rd. - Byars, Oklahoma 74831



BALDCO EMULOTA 614 Donor Dam of Lot 19-19B and Full Sister to Deer Valley Traction

19 Linz Emulota Exemplify 2315 ET

COW AAA 20633877 DOB 06/28/22 TATTOO 2315

Connealy Confidence Plus#
Linz Exemplify 71124
 19265123 M A R Erica 1617

Sitz Upward 307R#
Baldco Emulota 614
 18636709 JMB Emulota 013

Connealy Confidence 0100#
 Elbanna of Conanga 1209
 R B Tour Of Duty 177#
 MAR Erica Rito 1402

Connealy Onward#
 Sitz Henrietta Pride 81M
 S A V 004 Predominant 4438#
 BAR S Emulota 5426#

CED	15
BW	27
WW	5
YW	11
DMI	59
YH	9
SC	29
DOC	32
HP	92
CEM	61
MILK	20
MW	7
MH	8
CW	2
MARB	46
RE	1
FAT	12
TEND	14



CED	BW	WW	YW	SC	HP	MILK	DOC	
12	-0.1	78	135	1.09	8.1	32	24	
10%	25%	15%	15%	35%		15%	25%	
CLAW	ANGLE	PAP	CW	MARB	RE	SM	SB	SC
0.57	0.43	2.34	73	0.76	1.20	53	191	301
	25%		10%		2%		10%	10%

19A Linz Emulota 614-2301 ET

COW AAA 20635529 DOB 07/21/22 TATTOO 2301

Connealy Cavalry 1149#
WAR Cavalry B063 Z044
 17979842 War CC&7 Z044 X029

Sitz Upward 307R#
Baldco Emulota 614
 18636709 JMB Emulota 013

Connealy Consensus#
 Brista of Conanga 927T
 SydGen C C & 7#
 War Game Day X029 U239

Connealy Onward#
 Sitz Henrietta Pride 81M
 S A V 004 Predominant 4438#
 BAR S Emulota 5426#

CED	69
BW	91
WW	2
YW	4
DMI	97
YH	5
SC	10
DOC	73
HP	34
CEM	15
MILK	76
MW	6
MH	2
CW	1
MARB	24
RE	6
FAT	9
TEND	19



CED	BW	WW	YW	SC	HP	MILK	DOC	
6	3.1	87	156	1.30	14.0	23	12	
		3%	3%	25%	30%			
CLAW	ANGLE	PAP	CW	MARB	RE	SM	SB	SC
0.53	0.44	0.27	89	0.92	1.05	56	206	323
	30%	30%	1%	25%	10%		3%	4%

Daughters of this Linz donor have been popular over the years with females working for the Emmy Group, Antczak Angus, Pine Tree Ranch, Southard Land and Cattle, Galaxy Beef, Westwind Angus, Stratford Seedstock, Meadow Lawn Angus, Salt Creek Angus, and Coldwater Creek Cattle. Emulota 614 is the full sister to the Deer Valley and Select Sires herd sire, Traction.

19B Linz Emulota Cavalry 2325 ET

COW AAA 20647083 DOB 07/22/22 TATTOO 2325

Connealy Cavalry 1149#
WAR Cavalry B063 Z044
 17979842 War CC&7 Z044 X029

Sitz Upward 307R#
Baldco Emulota 614
 18636709 JMB Emulota 013

Connealy Consensus#
 Brista of Conanga 927T
 SydGen C C & 7#
 War Game Day X029 U239

Connealy Onward#
 Sitz Henrietta Pride 81M
 S A V 004 Predominant 4438#
 BAR S Emulota 5426#

CED	47
BW	31
WW	13
YW	16
DMI	97
YH	10
SC	43
DOC	62
HP	38
CEM	23
MILK	10
MW	9
MH	4
CW	4
MARB	11
RE	41
FAT	72
TEND	20



CED	BW	WW	YW	SC	HP	MILK	DOC	
7	0.4	72	134	0.89	13.6	34	13	
		30%	25%	15%	35%	10%		
CLAW	ANGLE	PAP	CW	MARB	RE	SM	SB	SC
0.51	0.55	-0.58	72	1.12	0.64	47	188	291
		15%	10%	15%		10%	15%	





Lot 20 LINZ LADY HORIZON 2357



CAV LADY INNOVATION 2145-617 Donor Dam of Lot 20



Linz Lady Horizon 2357 ET

COW AAA 20647846 DOB 09/23/22 TATTOO 2357

G A R Sunbeam
PCC Horizon 025
19845469 Pohlman Barbara 8178

MAR Innovation 251#
CAV Lady Innovation 2145-617
18576258 RB Lady Sterling 890-2145

G A R Sunrise#
G A R Ingenuity 3132
Connealy Confidence Plus#
Pohlman Barbara 6861
Connealy Impression#
MAR Final Kahuna 856#
HAYNES Sterling 924
R B Lady Standard 305-890



CED	
BW	
WW	
YW	
DMI	
YH	
SC	
DOC	
HP	
CEM	
MILK	
MW	
MH	
CW	
MARB	
RE	
FAT	
TEND	



CED	BW	WW	YW	SC	HP	MILK	DOC	
4	2.1	73	129	0.74	10.2	24	23	
		20%	20%				30%	
CLAW	ANGLE	PAP	CW	MARB	RE	SM	SB	SC
0.42	0.39	2.14	58	1.17	1.05	69	201	330
20%	15%		30%	10%	10%	35%	4%	3%

Lady Innovation 2145-617 daughters captured the lot 1 spot of the 2022 sale with her top selling daughter valuing \$90,000 selling to Advantage Angus. These daughters of the \$32,500 Lady Innovation 2145-617 are also maternal siblings to the \$54,000 valued and second highest seller of the 2021 National Finals sale going to Spruce Mountain. Daughters of 617 are also working for Express Ranches, Gutweins, and FB Genetics.



LINZ LADY CHANGE MAKER 1919 \$45,000 (Half Interest)
Maternal Sister to Lot 20



LINZ LADY REGIMENT 617-1611 Maternal Sister to Lot 20
Purchased by Fred Gutwein, IN



LINZ RITA STOCK FUND 1908
\$15,000 Maternal Sister to Lot 21
Purchased by Brumfield Angus in 2022



LINZ RITA CHANGEMAKER 1921
Maternal Sister to Lot 21
Purchased by GDD Angus in 2022



21 Linz Rita Deep River 2333 ET
COW AAA 20647862 DOB 09/07/22 TATTOO 2333

Ellingson Three Rivers 8062
Ellingson Deep River
19853339 EA Primrose 5083

44 Arsenal 4W07
HR Rita 7519
18880351 44 Rita 1434

Ellingson Homestead 6030
EA Emblynette 6279
Koupal Advance 28#
EA Primrose 3102#
Baldridge Waylon W34#
DZ ND 5050 OF15
A A R Ten X 7008 S A#
DSA New Direction 1022



CED	59
BW	89
WW	1
YW	1
DMI	100
YH	1
SC	51
DOC	21
HP	3
CEM	52
MILK	69
MW	1
MH	1
CW	1
MARB	2
RE	56
FAT	60
TEND	5



CED	BW	WW	YW	SC	HP	MILK	DOC	
7	3.4	91	165	0.63	19.1	21	21	
		2%	1%	2%				
CLAW	ANGLE	PAP	CW	MARB	RE	SM	SB	SC
0.54	0.29	1.23	73	1.47	0.51	73	204	338
		1%	10%	3%	25%		3%	2%

Stemming back to one of the big carcass influencers, New Direction 1022, this female comes through the \$65,000 donor Rita 1434, and her own dam the \$80,000 valued HF Rita 7519. Maternal sisters are working for Brumfield Angus and GDD Angus as graduates of our 2022 sale.

22 Linz Lady Breakthrough 2928
COW AAA 20507055 DOB 10/19/22 TATTOO 2928

G A R Prophet K263
Beal Breakthrough
19829112 H P C A Sure Fire S6

Linz Exemplify 71124
Linz Lady Exemplify 6338-0849
19945990 Powell Lady 6338

G A R Prophet#
Chair Rock 5050 G A R 1131
G A R Sure Fire#
H P C A Ingenuity A372
Connealy Confidence Plus#
M A R Erica 1617
Quaker Hill Rampage 0A36#
RB Lady River 116-4226



CED	64
BW	79
WW	4
YW	4
DMI	98
YH	10
SC	65
DOC	95
HP	25
CEM	11
MILK	50
MW	17
MH	8
CW	3
MARB	5
RE	4
FAT	10
TEND	62



CED	BW	WW	YW	SC	HP	MILK	DOC	
5	2.4	91	161	0.79	14.1	27	6	
		2%	2%	30%				
CLAW	ANGLE	PAP	CW	MARB	RE	SM	SB	SC
0.63	0.46	2.34	82	1.32	1.06	66	218	349
		2%	10%	10%	2%		1%	

This Lady comes from a first calf daughter of the \$150,000 Linz Exemplify 71124. This is a super high performance and great carcass valued Lady.



LINZ LADY EXEMPLIFY
6338-0849
Dam of Lot 22 as a heifer



LINZ LADY EXEMPLIFY
6338-0897
Full sister to the dam of Lot 22





24 LINZ LADY ARCHITECT 2723



23 Linz Lady Exemplify 2363 ET COW AAA 20633887 DOB 09/13/22 TATTOO 2363

Connealy Confidence Plus#
Linz Exemplify 71124
19265123 M A R Erica 1617

MAR Innovation 251#
LHA Lady Innovation 3189-514
18240244 RB Lady Complete 890-3189

Connealy Confidence 0100#
Elbanna of Conanga 1209
R B Tour Of Duty 177#
MAR Erica Rito 1402

Connealy Impression#
MAR Final Kahuna 856#
Summitcrest Complete 1P55#
R B Lady Standard 305-890



CED	
BW	
WW	
YW	
DMI	
YH	
SC	
DOC	
HP	
CEM	
MILK	
MW	
MH	
CW	
MARB	
RE	
FAT	
TEND	



CED	BW	WW	YW	SC	HP	MILK	DOC	
4	1.8	73	129	1.24	9.3	32	27	
		20%	20%	30%		15%	15%	
CLAW	ANGLE	PAP	CW	MARB	RE	SM	SB	SC
0.49	0.46	1.60	65	1.24	1.14	63	205	329
			15%	10%	3%		3%	3%

Out of an own daughter of the \$130,000 "3189" whose daughters include the \$240,000 valued, Lady Exemplify 0736, the 2021 PGS Grand Champion at Eastern and Western Regional. As well as the \$210,000 valued Lady President 9221 selected by Herbster Angus, Lady Excitement 6172 for a \$105,000 valuation to Bruiser and Blade.



LHA LADY INNOVATION 3189-514
Dam of Lot 23



LINZ EXEMPLIFY 0736 \$240,000 Valued 3/4 Sister to Lot 23
Most accomplished PGS entry



LINZ LADY EXCITEMENT 6172 \$105,000 valued
Granddam of Lot 24

24 Linz Lady Architect 2723 COW AAA 20507028 DOB 07/24/22 TATTOO 2723

SydGen Blueprint
S Architect 9501
19437622 S Blossom 7514

Hoover No Doubt
Linz Lady No Doubt 6172-0910
19861049 Linz Lady Excitement 6172

KM Broken Bow 002#
Sitz Florabelle Fanny 4735
S Whitlock 179#
S Blossom 5525

Mogck Bullseye#
Miss Blackcap Ellston J2
Basin Excitement#
RB Lady Complete 890-3189



CED	9
BW	9
WW	7
YW	26
DMI	89
YH	74
SC	16
DOC	2
HP	22
CEM	7
MILK	91
MW	32
MH	37
CW	7
MARB	56
RE	60
FAT	98
TEND	91



CED	BW	WW	YW	SC	HP	MILK	DOC	
7	1.6	82	144	1.03	13.5	18	33	
		10%	10%		35%		2%	
CLAW	ANGLE	PAP	CW	MARB	RE	SM	SB	SC
0.39	0.50	-0.01	73	0.67	0.67	77	173	301
			15%	25%	10%		15%	15%

What a pedigree here sired by the highly used S Architect whose data balance and phenotype generate high hopes. His dam is a direct daughter of the \$105,000 6172 Bruiser and Blade purchase who is now working for B&K Angus. Lady Complete 890-3189, the grandmother is responsible for a major role in this herd for revenue production as well as turning out phenotype favorites year after year. The full sister to the dam of lot 24 is now working for JJ Angus in PA.



25

Linz Lady Magnitude 2220 ET
COW AAA 20395880 DOB 12/28/21 TATTOO 2220

Deer Valley Patriot 3222#
MG Magnitude
19467117 MG Erroline 8E

MAR Innovation 251#
Crouch Lady Innovation 8157
19135883 BAF Lady Identity 02-357

Connealy Capitalist 028#
Deer Valley Rita 0274
HAYNES Outright 452#
M A G Erroline 1B

Connealy Impression#
MAR Final Kahuna 856#
Koupals B&B Identity#
R B Lady Standard 305-02



CED	79
BW	78
WW	7
YW	7
DMI	81
YH	18
SC	84
DOC	62
HP	90
CEM	59
MILK	48
MW	3
MH	10
CW	2
MARB	46
RE	1
FAT	10
TEND	74



LINZ MAGNITUDE 1219
Full brother to Lot 25
Purchased to Kraus Angus Farm, TN
in 2023 sale



CED	BW	WW	YW	SC	HP	MILK	DOC	
7	0.6	75	132	0.42	6.5	27	17	
		35%	15%	20%				
CLAW	ANGLE	PAP	CW	MARB	RE	SM	SB	SC
0.54	0.45	-0.56	77	0.92	1.22	41	208	311
		35%	15%	4%	25%	2%	3%	10%

These two maternal sisters are by the stout made Linz donor, Crouch Lady Innovation 8157. Her flush by MG Magnitude started the 2023 Linz Bull sale with four full brothers to lot 25, two of which are working in purebred herds.



LINZ MAGNITUDE 2217
Full brother to Lot 25
Purchased to Sletten Angus, SD
in 2023 sale

25A

Linz Lady Identified 1056 ET
COW AAA 20305020 DOB 12/30/21 TATTOO 1056

Koupals B&B Identity#
Mill Brae Identified 4031#
17928462 Mill Brae Pro Blackcap 1092

MAR Innovation 251#
Crouch Lady Innovation 8157
19135883 BAF Lady Identity 02-357

Sitz Upward 307R#
B&B Erica 605#
GAR-EGL Protege#
Mill Brae FL Blackcap 5002

Connealy Impression#
MAR Final Kahuna 856#
Koupals B&B Identity#
R B Lady Standard 305-02



CED	71
BW	70
WW	6
YW	19
DMI	76
YH	50
SC	94
DOC	46
HP	28
CEM	34
MILK	85
MW	17
MH	23
CW	17
MARB	14
RE	14
FAT	52
TEND	3



CROUCH LADY INNOVATION 8157 Donor Dam of Lot 25 & 25A



CED	BW	WW	YW	SC	HP	MILK	DOC	
7	1.1	78	134	0.05	13.4	19	18	
		15%	15%	35%				
CLAW	ANGLE	PAP	CW	MARB	RE	SM	SB	SC
0.50	0.49	4.24	61	1.07	0.88	68	182	304
		25%	15%	20%	10%	10%		

Al'd to Riverbend Black Label on 06/01/23. Pasture Exposed to Riverbend Stepping Out K830 06/08/23 to 07/10/23. Black Label is the \$150,000 top seller of the 23 Riverbend Ranches bull sale.

26

Linz Rita Magnitude 2444
COW AAA 20589599 DOB 11/11/22 TATTOO 2444

Deer Valley Patriot 3222#
MG Magnitude
19467117 MG Erroline 8E

Hoover No Doubt
RRR Rita R3219
19552299 Chair Rock 100X 6017

Connealy Capitalist 028#
Deer Valley Rita 0274
HAYNES Outright 452#
M A G Erroline 1B

Mogck Bullseye#
Miss Blackcap Ellston J2
G A R 100X#
Chair Rock 5050 G A R 1131



CED	27
BW	32
WW	32
YW	14
DMI	86
YH	46
SC	61
DOC	87
HP	58
CEM	8
MILK	77
MW	28
MH	32
CW	24
MARB	12
RE	4
FAT	21
TEND	42



PINE VIEW RITA H190 \$22,000 Full Sister to Dam of Lot 26



CED	BW	WW	YW	SC	HP	MILK	DOC		
11	-0.1	69	128	1.04	10.5	23	11		
		15%	25%	30%	25%				
CLAW	ANGLE	PAP	CW	MARB	RE	SM	SB	SC	
0.44	0.33	-2.70	67	1.29	1.11	60	209	331	
		25%	2%	1%	15%	10%	4%	2%	3%

Linz Rita Magnitude 2444 is out of a full sister to the \$22,000 Pine View Rita H190 purchased by Matt Gajewski, IL. The grandmother is the \$34,000 valued 6017 who is a daughter of the high valued "1131". Two 6017 daughters by Rawhide generated \$15,000 each in the 21 RRR sale. Excellent PAP EPD and carcass value here.

Linz Heritage Angus



27

Linz Evergreen F067-2714

COW AAA 20507096 DOB 07/23/22 TATTOO 2714

GAR Discovery 6737H
E & B Wildcat 9402
 19810163 E&B Lady Plus 643

Basin Payweight 1682#
Woodhill Evergreen B233-F067
 19194510 Woodhill Evergreen Z291-B233

V A R Discovery 2240#
 G A R Ingenuity 3132
 Connealy Confidence Plus#
 E&b Lady Credence 190#
 Basin Payweight 006S#
 21AR O Lass 7017
 Tehama Sierra Cut Z118
 Woodhill Evergreen U6-Z291



CED	39
BW	67
WW	5
YW	2
DMI	100
YH	8
SC	81
DOC	64
HP	21
CEM	41
MILK	3
MW	2
MH	5
CW	2
MARB	17
RE	13
FAT	40
TEND	45



CED	BW	WW	YW	SC	HP	MILK	DOC	
11	0.9	86	160	0.42	13.9	41	19	
		4%	2%	30%		1%		
CLAW	ANGLE	PAP	CW	MARB	RE	SM	SB	SC
0.55	0.44	3.71	86	1.01	1.03	45	203	308
		30%	2%	20%	10%	3%	10%	

Leading off this pack of Wildcat daughters is one from a young Woodhill Evergreen cow that is the maternal sister to the \$200,000 valued Woodhill Blueprint at Select Sires. Great performance and carcass value to be found here with a bottom side pedigree of maternal strength.



27A

Linz Empress Wildcat 2733

COW AAA 20507101 DOB 08/05/22 TATTOO 2733

GAR Discovery 6737H
E & B Wildcat 9402
 19810163 E&B Lady Plus 643

R B Tour Of Duty 177#
Wilks Empress 5227
 18408378 OSU Empress 3112

V A R Discovery 2240#
 G A R Ingenuity 3132
 Connealy Confidence Plus#
 E&b Lady Credence 190#
 Werner War Party 2417#
 B A Lady 6807 305
 EXAR Upshot 0562B#
 OSU Empress 9101



CED	13
BW	29
WW	11
YW	4
DMI	97
YH	14
SC	85
DOC	45
HP	62
CEM	97
MILK	24
MW	8
MH	9
CW	2
MARB	10
RE	22
FAT	36
TEND	85



CED	BW	WW	YW	SC	HP	MILK	DOC	
14	-0.2	71	138	0.26	11.1	32	22	
		4%	20%	25%	15%	15%	35%	
CLAW	ANGLE	PAP	CW	MARB	RE	SM	SB	SC
0.56	0.42	2.18	76	1.07	0.82	48	201	309
		20%	5%	15%	30%	4%	10%	

TOP 5% CLAW

This direct daughter of one of the first Tour of Duty daughters to surface as a donor dam in the breed, RB Tour 03-386. She was a prolific donor for THM Land and Cattle in Bay MO and now working for Linz Heritage. As massive and broody of a donor as you can make one with excellent feet and it shows on paper as well.

28

Linz Rita Wildcat 386-2481 ET

COW AAA 20594638 DOB 11/21/22 TATTOO 2481

GAR Discovery 6737H
E & B Wildcat 9402
 19810163 E&B Lady Plus 643

R B Tour Of Duty 177#
RB Rita Tour 03-386
 17558187 Gaffney Blackcap 03

V A R Discovery 2240#
 G A R Ingenuity 3132
 Connealy Confidence Plus#
 E&b Lady Credence 190#
 Werner War Party 2417#
 B A Lady 6807 305
 S A V Bismarck 5682#
 Gaffney New Design 830#



CED	49
BW	80
WW	7
YW	12
DMI	79
YH	16
SC	65
DOC	38
HP	37
CEM	43
MILK	38
MW	10
MH	20
CW	3
MARB	56
RE	1
FAT	3
TEND	82



CED	BW	WW	YW	SC	HP	MILK	DOC	
8	2.5	85	149	0.65	13.1	30	22	
		4%	5%	25%		35%		
CLAW	ANGLE	PAP	CW	MARB	RE	SM	SB	SC
0.35	0.40	1.37	76	0.63	1.16	66	178	297
		5%	15%	5%	3%	10%	10%	



RB RITA TOUR 03-386 Donor Dam of Lot 28

29

Linz Lady Wildcat 2476

COW AAA 20594630 DOB 11/21/22 TATTOO 2476

GAR Discovery 6737H
E & B Wildcat 9402
 19810163 E&B Lady Plus 643

V A R Signal 7244
Linz Lady Signal 6166-97129
 19630853 Linz Lady Inn 3276-6166

V A R Discovery 2240#
 G A R Ingenuity 3132
 Connealy Confidence Plus#
 E&b Lady Credence 190#
 Basin Payweight 1682#
 PF CC&7 Henrietta Pride 1044
 MAR Innovation 251#
 RB Lady Tombstone 02-3276



CED	54
BW	88
WW	11
YW	4
DMI	88
YH	20
SC	78
DOC	12
HP	40
CEM	34
MILK	9
MW	14
MH	18
CW	6
MARB	4
RE	25
FAT	23
TEND	72



CED	BW	WW	YW	SC	HP	MILK	DOC	
10	1.5	73	135	0.32	13.1	36	28	
		20%	20%	15%	4%		10%	
CLAW	ANGLE	PAP	CW	MARB	RE	SM	SB	SC
0.51	0.48	4.32	65	1.29	0.76	69	198	326
		15%	10%	35%	35%	4%	3%	

The dam of lot 29 is a daughter of the \$80,000 Lady Inn 3276-6166 purchased by Brumfield Angus and goes back to the \$52,000 Tombstone 02-3276. E&B Wildcat was picked up by Genex as a calving ease, growth and carcass specialist with foot and docility improvements backed by a maternal pedigree.



30 Linz Rica Regiment 0865-2921

COW AAA 20637151 DOB 10/15/22 TATTOO 2921

WAR Cavalry B063 Z044
Wilks Regiment 9035
 19401188 Vintage Chloe 6137

KR Pacesetter
Linz Rica Pacesetter 0865
 19978649 Linz Rica Made 303-6169

Connealy Cavalry 1149#
 War CC&7 Z044 X029
 V A R Empire 3037
 V A R Chloe 2227

RBM Step Ahead C80
 KR Blackbird 4295
 R B American Made 197
 LHA Rica 1123-303

CED	88
BW	92
WW	1
YW	1
DMI	100
YH	2
SC	6
DOC	78
HP	46
CEM	52
MILK	33
MW	1
MH	2
CW	1
MARB	57
RE	1
FAT	18
TEND	74

CED	BW	WW	YW	SC	HP	MILK	DOC	
5	2.7	95	167	1.67	13.2	28	9	
		1%	1%	10%	35%			
CLAW	ANGLE	PAP	CW	MARB	RE	SM	SB	SC
0.66	0.63	2.13	87	0.65	1.07	53	191	301
			1%		10%		10%	10%



31 Linz Lass 2741

COW AAA 20645465 DOB 08/16/22 TATTOO 2741

Tehama Patriarch F028
HAYNES Papa 0100
 19842240 HAYNES Elite Lass 452 8247

WR Journey-1X74#
SS Lass E159D
 18856079 P A R 3 Lass 3301

S S Niagara Z29#
 Tehama Elite Blackbird D826
 HAYNES Outright 452#
 HAYNES Elite Lass Waylon 366

B/R Future Direction 4268
 2 Bar 5050 New Design 7831
 P A R B Design Plus 97
 P A R 3 Queen Lass 3101

CED	68
BW	57
WW	22
YW	9
DMI	83
YH	2
SC	17
DOC	48
HP	3
CEM	2
MILK	23
MW	8
MH	3
CW	6
MARB	22
RE	9
FAT	54
TEND	66

CED	BW	WW	YW	SC	HP	MILK	DOC	
3	2.3	69	133	1.40	17.9	28	16	
		30%	15%	20%	4%			
CLAW	ANGLE	PAP	CW	MARB	RE	SM	SB	SC
0.48	0.52	-2.22	70	0.92	1.00	63	196	317
			2%	10%	25%	10%	5%	4%



32 Linz Blackbird Doubt 2834

COW AAA 20492450 DOB 09/09/22 TATTOO 2834

Hoover No Doubt
Hart No Doubt 9538
 19567300 Hart Queen Perfecta 5179

EXAR Monumental 6056B
EZAR Blackbird 9098
 19419310 EZAR Blackbird 6006

Mogck Bullseye#
 Miss Blackcap Ellston J2
 Connealy Cavalry 1149#
 Hart Queen Perfecta 3304

3F Epic 4631#
 FWY 7008 of C085 4029
 WR Journey-1X74#
 Sandpoint Blackbird 8809

CED	6
BW	9
WW	45
YW	40
DMI	87
YH	87
SC	63
DOC	25
HP	51
CEM	10
MILK	70
MW	74
MH	55
CW	19
MARB	4
RE	24
FAT	68
TEND	61

CED	BW	WW	YW	SC	HP	MILK	DOC		
11	0.5	71	131	0.44	11.5	21	25		
		15%	35%	25%	20%		20%		
CLAW	ANGLE	PAP	CW	MARB	RE	SM	SB	SC	
0.52	0.48	0.52	69	1.34	0.94	75	210	347	
			35%	10%	5%	15%	20%	2%	1%



33 Linz Lady Whitewater 2391 ET

COW AAA 20637321 DOB 08/09/22 TATTOO 2391

Mill Brae Identified 4031#
HCC Whitewater 9010
 19870506 Rock Creek Sara 6066

Thomas Up River 1614
LHA Lady Up River 09-520
 18244000 R B Lady Standard 305-09

Koupals B&B Identity#
 Mill Brae Pro Blackcap 1092
 Silveiras Conversion 8064
 H P C A Confidence A322

Sitz Upward 307R#
 Thomas Carol 7595
 LCC New Standard#
 B A Lady 6807 305

CED	16
BW	5
WW	18
YW	8
DMI	97
YH	8
SC	30
DOC	65
HP	52
CEM	3
MILK	45
MW	12
MH	8
CW	9
MARB	7
RE	19
FAT	73
TEND	99

CED	BW	WW	YW	SC	HP	MILK	DOC	
8	-0.2	78	149	1.50	10.7	28	18	
		35%	20%	15%	5%	15%		
CLAW	ANGLE	PAP	CW	MARB	RE	SM	SB	SC
0.70	0.45	2.36	72	1.23	0.86	50	194	302
			35%	10%	10%	25%	5%	10%



Swigart

LHA LADY UP RIVER 09-520 \$28,000 Donor Dam of Lot 33 purchased by Bosworth Farms in 2021 sale



LINZ LADY ACCLAIM 420-8802 \$65,000 (Half Interest) Donor Dam of Lot 34
Purchased by Spruce Mountain Ranch at 2018 National Finals Angus Sale



Linz Lady Iconic 8802-1829 ET
COW AAA 20305078 DOB 11/07/21 TATTOO 1829

Musgrave 316 Stunner
DB Iconic G95
19611994 DB Ms Discovery D13

LD Capitalist 316#
MCATL Blackbird 831-1378#
V A R Discovery 2240#
DB Ms Final Tool 4120

Jindra Acclaim#
Linz Lady Acclaim 420-8802
19230102 RB Lady Absolute 240-420

Jindra 3rd Dimension
Jindra Blackbird Lassy 1111
K C F Bennett Absolute#
RB Lady Sterling 890-240



CED	BW	WW	YW	SC	HP	MILK	DOC	
6	1.7	83	156	0.75	11.4	33	23	
		5%	3%			10%	30%	
CLAW	ANGLE	PAP	CW	MARB	RE	SM	SB	SC
0.66	0.53	1.56	84	1.18	0.87	52	216	332
			2%	10%	20%	2%	2%	



CED	86
BW	92
WW	2
YW	1
DMI	96
YH	9
SC	56
DOC	26
HP	43
CEM	83
MILK	5
MW	4
MH	19
CW	1
MARB	5
RE	14
FAT	59
TEND	89

This is a direct daughter of the \$65,000 half interest selection from Spruce Mountain Ranch from our consignment to the 2018 National Finals Angus Sale. AI'd to Baldrige Jordan on 06/01/23. Pasture Exposed to Riverbend Stepping Out K830 06/08/23 to 07/10/23.



Linz Empress 1815 ET
COW AAA 20297409 DOB 11/02/21 TATTOO 1815

Connealy Confidence Plus#
Linz Exemplify 71124
19265123 M A R Erica 1617

Connealy Confidence 0100#
Elbanna of Conanga 1209
R B Tour Of Duty 177#
MAR Erica Rito 1402

G A R Inertia
Wilks Empress 9467
19504800 Wilks Empress 5227

G A R Momentum
G A R Prophet 2984
R B Tour Of Duty 177#
OSU Empress 3112



CED	89
BW	84
WW	1
YW	1
DMI	100
YH	5
SC	19
DOC	32
HP	98
CEM	39
MILK	24
MW	1
MH	2
CW	1
MARB	7
RE	16
FAT	94
TEND	53



CED	BW	WW	YW	SC	HP	MILK	DOC	
0	2.6	98	175	1.11	4.9	30	28	
		1%	1%	35%		25%	10%	
CLAW	ANGLE	PAP	CW	MARB	RE	SM	SB	SC
0.49	0.52	4.58	89	1.31	0.86	34	212	309
			1%	10%	25%	2%	10%	

The daughters of Exemplify have been impressive and spot on for phenotype. This one sets high marks for performance and is provided by the Empress line of females that have been long selected for a superior look and consistent type and kind. AI'd to Bear Mtn North Star on 06/01/23. Pasture Exposed to Riverbend Stepping Out K830 06/08/23 to 07/10/23.



Linz Lady Stock Fund 1759 ET
COW AAA 20165994 DOB 08/15/21 TATTOO 1759

Deer Valley Growth Fund
EXAR Stock Fund 9097B
19411210 EXAR Empress 0875

Basin Payweight 1682#
Deer Valley Rita 36113
G A R Prophet K243
EXAR Empress 2622

Basin Payweight 107S#
Linz Lady 107S 3189-7004
19511971 RB Lady Complete 890-3189

Vermilion Payweight J847#
Basin Lucy 3829
Summitcrest Complete 1P55#
R B Lady Standard 305-890



CED	93
BW	92
WW	2
YW	10
DMI	93
YH	16
SC	72
DOC	20
HP	40
CEM	69
MILK	41
MW	25
MH	14
CW	2
MARB	46
RE	1
FAT	31
TEND	92



CED	BW	WW	YW	SC	HP	MILK	DOC	
-1	3.1	84	145	0.18	11.5	30	25	
		5%	10%			25%	20%	
CLAW	ANGLE	PAP	CW	MARB	RE	SM	SB	SC
0.57	0.45	2.94	77	0.69	1.27	73	185	313
			4%	1%	25%	10%	5%	

Selling a maternal sister to the great \$240,000 valued Lady Exemplify 0736, a past PGS Champion and feature in the Linz and Double Barrel herds. 7004 has been replicating her mother, 3189's, ability to transmit and pass on the Lady legacy that is known for performance and maternal power. This one has a phenotype that will be popular in person on sale day. Don't overlook her. Due to calve 10/28/23 to HHR Accomplishment J001.

DONOR MATERIAL



LINZ LADY 107S 3189-7004 Donor Dam of Lot 36





37

Linz Lady No Doubt 5525-1016
COW AAA 20297367 DOB 12/14/21 TATTOO 1016

Hoover No Doubt
Hart No Doubt 9538
 19567300 Hart Queen Perfecta 5179

Gaffney Game Changer 371
RB Lady Changer 1252-5525
 18477343 Rock Creek Lady 844-1252

Mogck Bullseye#
 Miss Blackcap Ellston J2
 Connealy Cavalry 1149#
 Hart Queen Perfecta 3304

Connealy Confidence 0100#
 R B Lady Standard 305-890
 G A R Objective 7125#
 R B Lady Focus 303-844

CED	4
BW	5
WW	33
YW	42
DMI	82
YH	66
SC	91
DOC	31
HP	96
CEM	13
MILK	79
MW	75
MH	68
CW	25
MARB	33
RE	20
FAT	67
TEND	96



CED	BW	WW	YW	SC	HP	MILK	DOC	
9	1.1	74	130	0.24	4.6	24	22	
30%		20%	20%				35%	
CLAW	ANGLE	PAP	CW	MARB	RE	SM	SB	SC
0.55	0.53	0.55	70	0.84	0.94	61	181	296
		35%	10%	35%	15%		10%	10%

A good performance female that is from the Linz herd sire, Hart No Doubt 9538. This sire's dam has churned out incredible sire power with many full and maternal sibs working in registered herds. AI'd to Linz Exemplify 71124 on 06/01/23. Pasture Exposed to Riverbend Stepping Out K830 06/08/23 to 07/10/23.

38

Linz Lady Forefront 424-2235 ET
COW AAA 20395881 DOB 01/15/22 TATTOO 2235

G A R Ashland
Pine View Forefront
 19137269 Pine View Rita C070

Connealy Confidence 0100#
RB Lady Confidence 890-424
 17876494 R B Lady Standard 305-890

G A R Early Bird
 Chair Rock Ambush 1018
 G A R Daylight
 G A R Predestined 287L

Connealy Tobin
 Becka Gala of Conanga 8281
 LCC New Standard#
 B A Lady 6807 305

CED	51
BW	70
WW	35
YW	37
DMI	46
YH	14
SC	70
DOC	28
HP	92
CEM	63
MILK	49
MW	15
MH	16
CW	14
MARB	25
RE	9
FAT	12
TEND	84



CED	BW	WW	YW	SC	HP	MILK	DOC	
9	1.5	68	120	0.09	6.6	25	23	
30%		35%	35%				30%	
CLAW	ANGLE	PAP	CW	MARB	RE	SM	SB	SC
0.44	0.38	0.93	56	0.94	1.02	48	180	281
	25%	10%	35%	25%	10%		10%	20%

This one goes right back to one of the cornerstone Lady's of 890 as the grandmother. The Confidence mate to 890 was classic and generated big results. This daughter of the Linz herd sire Forefront comes from an extremely proven yet so useful pedigree on both sides. AI'd to Riverbend Black Label on 06/01/23. Pasture Exposed to Riverbend Stepping Out K830 06/08/23 to 07/10/23.

39

ACC Blackcap 0027
COW AAA 19674950 DOB 01/30/20 TATTOO 0027

HA Cowboy Up 5405#
ACC Cowboy Up 8018
 19044500 CoX Y03s Rita 4192

Basin Payweight 1682#
Smith Valley Blackcap 7097
 19109652 Quaker Hill Blackcap 4PT4

HA Outside 3008
 HA Blackcap Lady 1602#
 V A R Discovery 2240#
 CoX Rita 7080 Y03S

Basin Payweight 006S#
 21AR O Lass 7017
 GAR-EGL Protege#
 QHF Blackcap 6E2 of4V16 4355

CED	90
BW	97
WW	1
YW	1
DMI	100
YH	25
SC	5
DOC	62
HP	91
CEM	2
MILK	67
MW	1
MH	2
CW	1
MARB	31
RE	24
FAT	47
TEND	58



CED	BW	WW	YW	SC	HP	MILK	DOC	
-1	6.1	113	199	1.84	7.6	26	14	
		1%	1%	3%				
CLAW	ANGLE	PAP	CW	MARB	RE	SM	SB	SC
0.50	0.52	2.79	100	0.80	0.84	31	205	297
			1%	20%	15%		1%	4%

One of the few that sorts in the breed with her level of WW and YW EPD. Her grandmother is the sister to Rampage and works for Smith Valley Angus in MO. AI'd to Sterling Pacific 904 on 06/08/23. Pasture Exposed to Musgrave Open Road 442 06/08/23 to 07/10/23.



39



MUSGRAVE OPEN ROAD 442 \$42,000 Herd Sire purchased by Linz Heritage Angus in 2023 Musgrave Sale



41 EF RITA 7127



40 WSC Belle H952 ET

COW AAA 19724047 DOB 03/23/20 TATTOO H952

Connealy In Sure 8524#
G A R Sure Fire#
 17328461 Chair Rock 5050 G A R 8086

B/R Ambush 28#
G A R 28 Ambush 1069
 16496699 G A R Objective 1885

Mytty In Focus#
 Entreena of Conanga 657
 G A R New Design 5050#
 Chair Rock Grid Maker 2107

Rockn D Ambush 1531#
 B/R Ruby of Tiffany 8250
 S S Objective T510 OT26#
 G A R 1407 New Design 2232



CED	28
BW	56
WW	79
YW	64
DMI	29
YH	42
SC	29
DOC	56
HP	24
CEM	89
MILK	49
MW	73
MH	39
CW	38
MARB	25
RE	74
FAT	46
TEND	52

CED	BW	WW	YW	SC	HP	MILK	DOC	
8	2.2	65	114	1.13	14.2	27	21	
30%		25%	30%	25%	20%		30%	
CLAW	ANGLE	PAP	CW	MARB	RE	SM	SB	SC
0.56	0.48	-1.07	58	0.98	0.53	67	172	290
		10%	15%	10%		30%	10%	5%

Al'd to Sterling Pacific 904 on 06/08/23. Pasture Exposed to Musgrave Open Road 442 06/08/23 to 07/10/23.

41 EF Rita 7127 ET

COW AAA 18719253 DOB 02/01/17 TATTOO 7127

Basin Payweight 006S#
Basin Payweight 1682#
 17038724 21AR O Lass 7017

G A R New Design 5050#
G A R 5050 New Design 1823
 17623260 G A R 28 Ambush 380

Vermilion Payweight J847#
 Basin Lucy 3829
 HARB Pendleton 765 J H#
 21AR O Lass F24A
 B/R New Design 036#
 G A R Precision 706
 B/R Ambush 28#
 G A R Predestined 1907



CED	13
BW	4
WW	61
YW	13
DMI	67
YH	63
SC	68
DOC	2
HP	27
CEM	27
MILK	32
MW	26
MH	61
CW	41
MARB	39
RE	72
FAT	55
TEND	79

CED	BW	WW	YW	SC	HP	MILK	DOC	
9	-0.7	65	128	0.60	14.4	35	34	
25%	15%	25%	15%		20%	10%	1%	
CLAW	ANGLE	PAP	CW	MARB	RE	SM	SB	SC
0.56	0.56	0.16	51	0.83	0.44	61	154	261
		25%	25%	20%		20%	20%	

Al'd to Riverbend Black Label on 06/08/23. Pasture Exposed to Musgrave Open Road 442 06/08/23 to 07/10/23.

42 Linz May Fund 318-97121 ET

COW AAA 19844189 DOB 12/07/19 TATTOO 97121

Basin Payweight 1682#
Deer Valley Growth Fund
 18827828 Deer Valley Rita 36113

Connealy Consensus 7229#
PALM Blackcap May 318
 18253416 S A V Blackcap May 1384

Basin Payweight 006S#
 21AR O Lass 7017
 Plattemere Weigh Up K360#
 Deer Valley Rita 9457

Connealy Consensus#
 Blue Lilly of Conanga 16
 S A V Iron Mountain 8066#
 S A V Blackcap May 4136



CED	86
BW	93
WW	2
YW	8
DMI	84
YH	55
SC	27
DOC	58
HP	34
CEM	11
MILK	93
MW	15
MH	33
CW	8
MARB	51
RE	12
FAT	42
TEND	13

CED	BW	WW	YW	SC	HP	MILK	DOC	
-3	5.4	101	171	1.39	13.1	19	16	
		1%	1%	15%	35%			
CLAW	ANGLE	PAP	CW	MARB	RE	SM	SB	SC
0.52	0.41	1.68	76	0.52	1.00	68	165	282
		15%	2%	4%	30%	10%	10%	

Al'd to Riverbend Black Label on 06/08/23. Pasture Exposed to Musgrave Open Road 442 06/08/23 to 07/10/23.

42A Linz May Epic 8354-97165

COW AAA 19887970 DOB 12/20/19 TATTOO 97165

3F Epic 4631#
Crouch Epic 830
 19323907 CAV Erica Tour 437-6437

K C F Bennett Fortress#
Linz May Fortress 318-8354
 19866287 PALM Blackcap May 318

Varilek Product 2010 04
 Zebo Queen 1072
 R B Tour Of Duty 177#
 GW Erica 437 of ICC

Connealy Consensus#
 Thomas Patricia 9705
 Connealy Consensus 7229#
 S A V Blackcap May 1384



CED	93
BW	85
WW	25
YW	17
DMI	98
YH	41
SC	25
DOC	49
HP	71
CEM	53
MILK	59
MW	12
MH	5
CW	18
MARB	59
RE	29
FAT	5
TEND	21

CED	BW	WW	YW	SC	HP	MILK	DOC	
-6	4.8	79	140	1.37	9.5	26	23	
		5%	4%	15%			20%	
CLAW	ANGLE	PAP	CW	MARB	RE	SM	SB	SC
0.57	0.47	3.13	66	0.58	0.68	43	151	239
			5%	25%		20%	35%	

Al'd to Baldrige Jordan on 06/08/23. Pasture Exposed to Musgrave Open Road 442 06/08/23 to 07/10/23.



43 Linz Lady Plan 4107-8139 ET

COW AAA 19089932 DOB 02/03/18 TATTOO 8139

Basin Payweight 1682#
ICC Master Plan
 18495017 RB Lady Denver 167-428

EXAR Denver 2002B#
SD Lady 4107 W
 17812609 R B Lady 7125-2933

Basin Payweight 006S#
 21AR O Lass 7017
 EXAR Denver 2002B#
 R B Lady Party 167-305
 EXAR Upshot 0562B#
 Exar Royal Lass 1067
 G A R Objective 7125#
 R B Lady Standard 308-933



CED	59
BW	66
WW	25
YW	11
DMI	83
YH	30
SC	38
DOC	29
HP	62
CEM	34
MILK	9
MW	25
MH	19
CW	12
MARB	24
RE	69
FAT	38
TEND	66



CED	BW	WW	YW	SC	HP	MILK	DOC	
7	1.3	73	132	0.93	10.9	40	23	
		10%	10%			1%	20%	
CLAW	ANGLE	PAP	CW	MARB	RE	SM	SB	SC
0.59	0.56	-0.13	65	0.75	0.58	59	163	270
		20%	5%	25%			15%	15%

Al'd to Sterling Pacific 904 on 06/08/23. Pasture Exposed to Musgrave Open Road 442 06/08/23 to 07/10/23.

44 Linz Lady Pacesetter 0872

COW AAA 19950934 DOB 12/04/20 TATTOO 0872

RBM Step Ahead C80
KR Pacesetter
 18874634 KR Blackbird 4295

K C F Bennett Absolute#
Linz Lady Absolute 6506
 18795888 CAV Lady Identity 1173-4263

Prairie Pride Next Step 2036#
 Basin Charisma U691
 Barstow Cash#
 WK Blackbird 2250
 S A V Final Answer 0035#
 Thomas Miss Lucy 5152
 Koupals B&B Identity#
 R B Lady Party 1173-844



CED	61
BW	69
WW	19
YW	38
DMI	82
YH	5
SC	10
DOC	51
HP	58
CEM	14
MILK	44
MW	37
MH	17
CW	9
MARB	32
RE	27
FAT	49
TEND	58



CED	BW	WW	YW	SC	HP	MILK	DOC	
6	1.8	67	114	1.75	12.0	26	21	
		20%	30%	4%			30%	
CLAW	ANGLE	PAP	CW	MARB	RE	SM	SB	SC
0.49	0.47	-2.12	58	0.81	0.71	73	163	284
		2%	15%	20%	25%	20%	15%	10%

Al'd to Baldrige Jordan on 06/08/23. Pasture Exposed to Musgrave Open Road 442 06/08/23 to 07/10/23.

45 Linz Lady Niagara B501-9766 ET

COW AAA 19546538 DOB 09/14/19 TATTOO 9766

Hoover Dam#
S S Niagara Z29#
 17287387 Jet S S X144

Koupal Advance 28#
Pasture View Lady B501
 18149732 PVA Lady Standard Z501

SydGen C C & 7#
 Erica of Ellston C124#
 B/R New Day 454#
 JET S S T151

Koupal Juneau 797#
 Koupal Ebonette 734
 LCC New Standard#
 B A Lady 6807 305



CED	82
BW	95
WW	8
YW	15
DMI	69
YH	9
SC	23
DOC	64
HP	22
CEM	52
MILK	16
MW	7
MH	23
CW	13
MARB	14
RE	11
FAT	58
TEND	41



CED	BW	WW	YW	SC	HP	MILK	DOC	
6	3.4	82	145	1.09	14.3	31	14	
		3%	3%	30%	20%	20%		
CLAW	ANGLE	PAP	CW	MARB	RE	SM	SB	SC
0.45	0.48	2.32	66	1.00	1.01	53	180	286
		25%	5%	10%	3%	4%	10%	

Al'd to Riverbend Black Label on 06/08/23. Pasture Exposed to Musgrave Open Road 442 06/08/23 to 07/10/23.

46 Linz Blackcap May 5302-9140 ET

COW AAA 19427556 DOB 01/21/19 TATTOO 9140

Hoover Dam#
S S Niagara Z29#
 17287387 Jet S S X144

EXAR Denver 2002B#
Powell Blackcap May 5302
 18204246 S A V Blackcap May 1384

SydGen C C & 7#
 Erica of Ellston C124#
 B/R New Day 454#
 JET S S T151
 EXAR Upshot 0562B#
 Exar Royal Lass 1067
 S A V Iron Mountain 8066#
 S A V Blackcap May 4136



CED	29
BW	52
WW	81
YW	48
DMI	61
YH	65
SC	49
DOC	51
HP	62
CEM	5
MILK	61
MW	37
MH	77
CW	40
MARB	52
RE	4
FAT	1
TEND	84



CED	BW	WW	YW	SC	HP	MILK	DOC	
5	3.4	70	135	0.83	11.4	27	17	
		15%	10%					
CLAW	ANGLE	PAP	CW	MARB	RE	SM	SB	SC
0.51	0.39	0.81	69	0.60	1.22	41	183	278
		10%	3%	1%	3%	10%		

Al'd to Baldrige Jordan on 06/08/23. Pasture Exposed to Musgrave Open Road 442 06/08/23 to 07/10/23.

47 Linz Lady Ten 4226-9184

COW AAA 19452662 DOB 02/28/19 TATTOO 9184

A A R Ten X 7008 S A#
2 S Top Ten
 18182543 2 S 16 Promptitude 538-1231

Thomas Up River 1614
RB Lady River 116-4226
 17958767 R B Lady 890-116

Mytty In Focus#
 A A R Lady Kelton 5551#
 SydGen C C & 7#
 2 S 095 Promptitude 103-538
 Sitz Upward 307R#
 Thomas Carol 7595
 G A R Objective 7125#
 R B Lady Standard 305-890



CED	24
BW	44
WW	50
YW	6
DMI	39
YH	21
SC	38
DOC	15
HP	36
CEM	77
MILK	59
MW	4
MH	8
CW	11
MARB	71
RE	1
FAT	1
TEND	66



CED	BW	WW	YW	SC	HP	MILK	DOC	
10	0.8	71	141	0.89	13.5	26	25	
		15%	4%	30%	15%			
CLAW	ANGLE	PAP	CW	MARB	RE	SM	SB	SC
0.39	0.46	0.02	71	0.54	1.17	41	183	278
		10%	35%	25%	3%	3%	10%	

Al'd to Riverbend Black Label on 06/08/23. Pasture Exposed to Musgrave Open Road 442 06/08/23 to 07/10/23.



47



New this year! **USING THE QR CODES**

View videos of each lot by opening the camera app on your smart phone, hovering over the QR code and tapping the link that appears! Please note that videos will be available two weeks prior to the sale.



48

Linz Lady Colonel 4230-8828 ET

COW AAA 19779318 **DOB** 09/21/18 **TATTOO** 8828

baldridge Xpand x743
Baldridge Colonel C251#
18493773 Baldridge Isabel Y69

Connealy Black Granite#
RB Lady Granite 890-4230
17958759 R B Lady Standard 305-890

Hoover Dam#
Baldridge Queen S87
Styles Upgrade J59#
Baldridge Isabel T935

Connealy Consensus 7229#
Eura Elga of Conanga 9109#
LCC New Standard#
B A Lady 6807 305

CED	95
BW	94
WW	28
YW	24
DMI	71
YH	31
SC	58
DOC	10
HP	72
CEM	66
MILK	58
MW	21
MH	31
CW	39
MARB	81
RE	29
FAT	8
TEND	40

CED	BW	WW	YW	SC	HP	MILK	DOC	
-3	3.6	77	136	0.47	8.4	31	28	
		10%	10%			20%	10%	
CLAW	ANGLE	PAP	CW	MARB	RE	SM	SB	SC
0.49	0.43	3.41	56	0.45	0.84	49	142	233
		20%	15%	15%			30%	

Al'd to Baldridge Jordan on 06/08/23. Pasture Exposed to Musgrave Open Road 442 06/08/23 to 07/10/23.

49

Linz Lady Enhance 3190-9926

COW AAA 19550140 **DOB** 09/25/2019 **TATTOO** 9926

SydGen Exceed 3223#
SydGen Enhance
18170041 SydGen Rita 2618

Summitcrest Complete 1P55#
RB Lady Complete 890-3190
17832472 R B Lady Standard 305-890

SydGen Googol
SydGen Forever Lady 1255
SydGen Liberty GA 8627#
Fox Run Rita 9308#

C F Right Design 1802#
Summitcrest Elba 1M17
LCC New Standard#
B A Lady 6807 305

CED	
BW	
WW	
YW	
DMI	
YH	
SC	
DOC	
HP	
CEM	
MILK	
MW	
MH	
CW	
MARB	
RE	
FAT	
TEND	

CED	BW	WW	YW	SC	HP	MILK	DOC	
4	1.6	70	125	1.97	13.6	43	23	
		30%	25%	4%	35%	1%	30%	
CLAW	ANGLE	PAP	CW	MARB	RE	SM	SB	SC
0.41	0.58	4.39	50	1.01	0.71	81	158	286
		20%		20%	10%	25%	15%	

Al'd to Riverbend Black Label on 06/08/23. Pasture Exposed to Musgrave Open Road 442 06/08/23 to 07/10/23.

50

Linz Lady Iron Horse 08101

COW AAA 20038178 **DOB** 12/14/20 **TATTOO** 08101

EXAR Stallion 7986
Big/WSC Iron Horse 025F
19415015 EXAR Henrietta Pride 5702

Diamond in the Rough#
Linz Lady Diamond 3190-8267
19115645 RB Lady Complete 890-3190

EXAR Stud 4658B#
EXAR Blackcap 3385
SandPoint Butkus X797#
Sitz Henrietta Pride 643T

Diamond Justice 901S#
Diamond Black Lady 7206#
Summitcrest Complete 1P55#
R B Lady Standard 305-890

CED	56
BW	45
WW	23
YW	40
DMI	44
YH	47
SC	84
DOC	3
HP	73
CEM	10
MILK	73
MW	50
MH	58
CW	49
MARB	85
RE	2
FAT	1
TEND	89

CED	BW	WW	YW	SC	HP	MILK	DOC	
7	0.8	69	120	0.41	10.3	24	31	
		20%	20%			2%		
CLAW	ANGLE	PAP	CW	MARB	RE	SM	SB	SC
0.40	0.45	0.60	41	0.41	1.13	77	136	253
		10%	30%	35%	2%	10%	25%	

Al'd to Riverbend Black Label on 06/08/23. Pasture Exposed to Musgrave Open Road 442 06/08/23 to 07/10/23.

WELCOME TO THE LINZ HERITAGE ANGUS FEMALE SALE



Matthew 6:19-21

Over a decade ago, I walked into an office on the south-side of Chicago that was home to the best steak purveyor in the world. The name of the company was Meats by Linz; the man was Fred Linz. That day, we talked about a vision, creating a full pasture-to-plate concept. Fred's passion for his family beef business has now spilled over into ranching and purebred Angus genetics. I can tell you this about Fred – he will not be denied on this mission. At his core, he is a meat cutter with a talent for people and a work ethic that will ensure success for all who buy into his, “not being the biggest, but trying to be the best,” mission.

As you view the offering, it's clear the focus is on building a cow herd and brand that will drive high-end seedstock genetics. A strong emphasis on genetic balance has been implemented to develop the best products in the pasture and on the plate. The EPD reflection of these females is elite and reflects the continued focus to be the best in multiple traits and values. The herd bull lineup at the ranch is one of the best bull lineups in the country. They have wasted no expense to make sure even the uterus that miss AI, get an AI-quality sire. The donor pen and young females compete at the highest level of the breed for desired traits. The cattle are ranch-raised and ready to have their best days for you, the customer. One unhappy customer is one too many for the Linz family.

When it comes full circle, the purebred Angus business is one of the most rewarding businesses in the world. The results are reflected here, and we are honored to be part of the team and vision. The crew at Linz is young, aggressive and are fun to try and keep up with. Their vision is Fred's vision, and that shared drive and energy is poured into this mission of building the best beef company in the world. If our team at CK6 can help in any way, please feel free to contact us. We look forward to seeing you in August to kick off the future in Oklahoma of this landmark vision.

God Bless - Chris Earl

Chris Earl - 630.675.6559 • Wes Tiemann - 816.244.4462 • Kody Fleeman - 573.881.0117 • Amanda Radke - 605.999.4300

7th Annual **FEMALE SALE**

SUNDAY, AUGUST 20, 2023 • 12 PM CDT

Sale held at Linz Heritage Angus at Blue Branch Ranch - 10370 Blue Branch Ranch Rd. - Byars, Oklahoma 74831

SALE CONTACTS

LINZ HERITAGE ANGUS OWNER:

Fred Linz - 708.259.1206

LINZ HERITAGE ANGUS STAFF:

Ben Weis, Ranch Manager - 312.439.0328

Zane Brazle, Herdsman - 312.856.5062

Anthony Randall, Cattle Procurement - 307.620.2890

SALE MANAGEMENT

Chris Earl, CK6 Consulting - 630.675.6559

Wes Tiemann, CK6 Consulting - 816.244.4462

Kody Fleeman, CK6 Consulting - 573.881.0117

Amanda Radke, CK6 Consulting - 605.999.4300

AUCTIONEER

Cody Lowdermann - 309.313.2171

RINGMEN

Jeff Mafi - 816.344.4266

Colton Pratz - 405.385.1054

Phil Stoll - 817-366-7332

SALE CONSULTANTS

Tom Dalby - 404.372.0973

Matt Myers - 405.315.7258

AIR TRAVEL

Will Rogers World Airport (OKC) - 1 hour

Tulsa International Airport - 2.5 hours

DFW International Airport - 2.5 hours

HOTELS

Hampton Inn & Suites - 105 South Humphrey Blvd. Pauls Valley, OK | 405.238.7700

Holiday Inn Express & Suites - 241 W Grant Ave. Pauls Valley, OK | 405.207.9434

Comfort Inn & Suites - 103 Humphrey Rd. Pauls Valley, OK | 405.207.9730

Best Western Plus - 2509 W Grant Ave. Pauls Valley, OK | 405.444.6035

TERMS & CONDITIONS

Terms of the sale are cash or check on sale day or payment wired on the next business day. Cattle will sell under the suggested Terms and Conditions of the American Angus Association (http://www.angus.org/Pub/suggested_sale_terms.pdf)

INSURANCE

James F Bessler Inc. - 815.762.2641, will be available to assist you with mortality insurance coverage.

TRUCKING

Randy Lathrop - 847.426.5009, will be available for all your transportation needs.

HEALTH

All cattle will have appropriate health papers for immediate shipping.

PREGNANCY INFORMATION

All cattle have been pregnancy checked and called AI or exposure as best determined by palpation. For the A.I. dates, they are not unconditionally guaranteed, other than the fact that they are pregnant.

SUPPLEMENTAL INFORMATION

Females will sell in sale order provided on sale day. A supplement sheet will also be available sale day with updated information. Announcements from the block will take precedence over printed material.

WATCH AND BID ONLINE

LiveAuctions.TV

Call Brooklyn Graham for details: (812) 530-0748

Brooklyn's email: brooklyn@liveauctions.tv.

SCHEDULE OF EVENTS

Saturday, August 19, 2023

8:00 AM - Cattle available for viewing

6:30 PM - Pre-Sale Dinner

Sunday, August 20, 2023

8:00 AM - Cattle available for viewing

11:00 AM - Pre-Sale Lunch

12:00 PM - 7th Annual Linz Heritage Angus Female Sale

USING THE QR CODES



View videos of each lot by opening the camera app on your smart phone, hovering over the QR code and tapping the link that appears! Please note that videos will be available two weeks prior to the sale.

linzheritageangus.com

BESPOKE

meat mx

BUTCHER



PARTNER SPOTLIGHT

MEAT MX

Born from the Growing Demand of High Quality Meat in Mexico

In 2022, a strong partnership between Meats by Linz, Linz Heritage Angus, and Meat Mx was formed to exclusively distribute LHA products in Mexico. This partnership is fueled by a shared goal of providing the best Black Angus beef from the United States to the Mexican market.

Founder, Santiago Marcellini, is focused on catering to the discerning meat requirements of the Riviera Maya tourist market. Since opening, Meat Mx has established itself at the most prestigious hotels and resorts in the region.

The hotels and resorts in the Riviera Maya market attract guests with refined palates that demand top-tier quality. The chefs of these outlets recognize Linz Heritage Angus beef as an essential and distinct element of their culinary creations and guest experiences.

Meat Mx is currently expanding its operations to Punta Mita, Nayarit - another highly exclusive tourist market in Mexico. In addition, they plan to venture into Baja California Sur, specifically in Cabo San Lucas, San José del Cabo, La Paz, and Todos Santos.

"At Meat Mx, we take pride in our achievements and continually strive for consistency and quality," said Santiago. "Meats by Linz and Linz Heritage Angus has set a precedence in the industry and we're thrilled to be a loyal partner and bring quality beef to Mexico."



Meat Mx founder, Santiago Marcellini with Meats by Linz & Linz Heritage Angus owner & CEO, Fred Linz at the 2023 National Restaurant Show



Linz Heritage Angus
P.O. Box 59
Calumet City, IL 60409

**FIRST CLASS MAIL
TIME DATED MATERIAL**



7th Annual
FEMALE SALE

SUNDAY • AUGUST 20 • 2023

12:00 PM CDT • BYARS, OKLAHOMA

